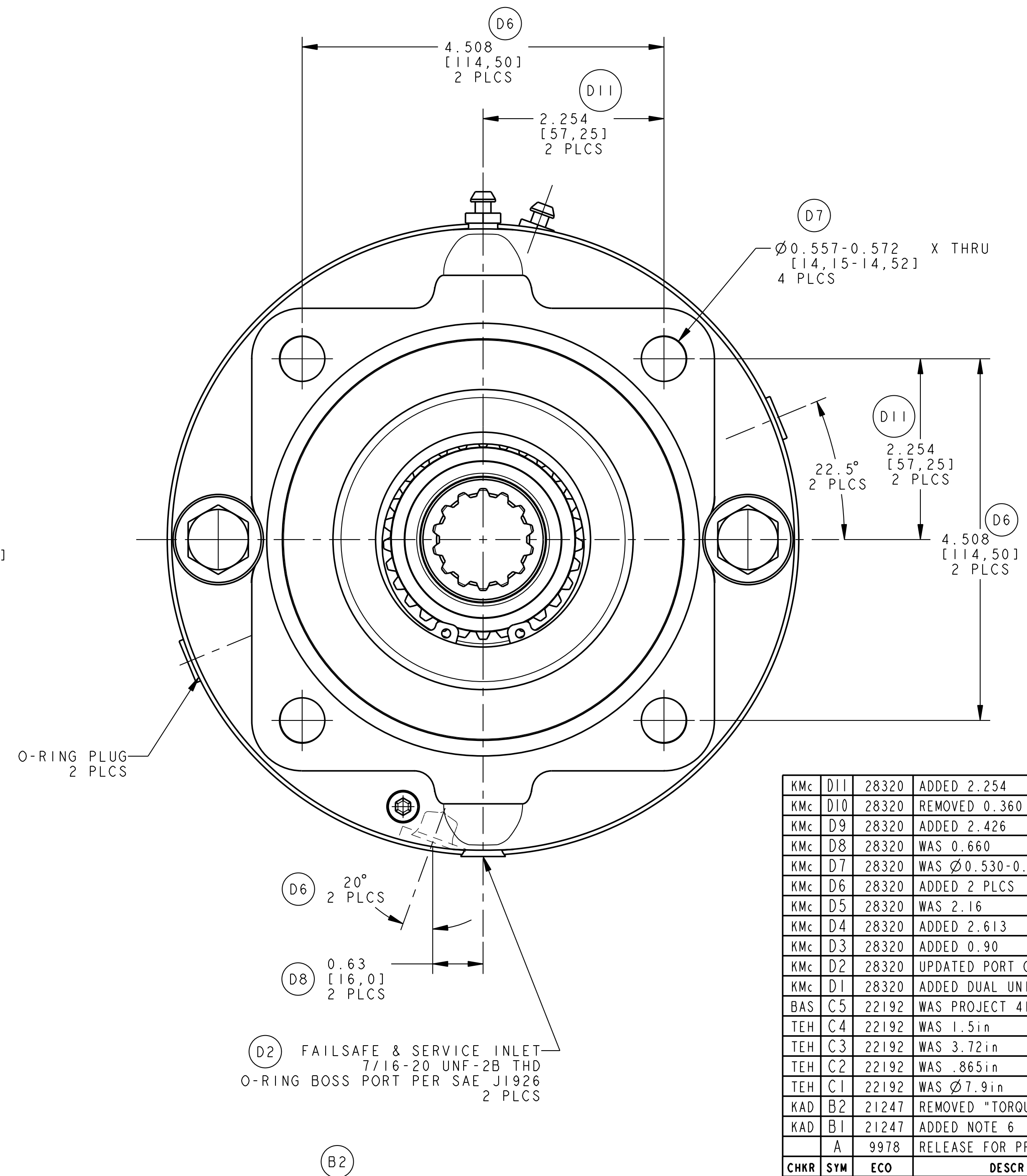
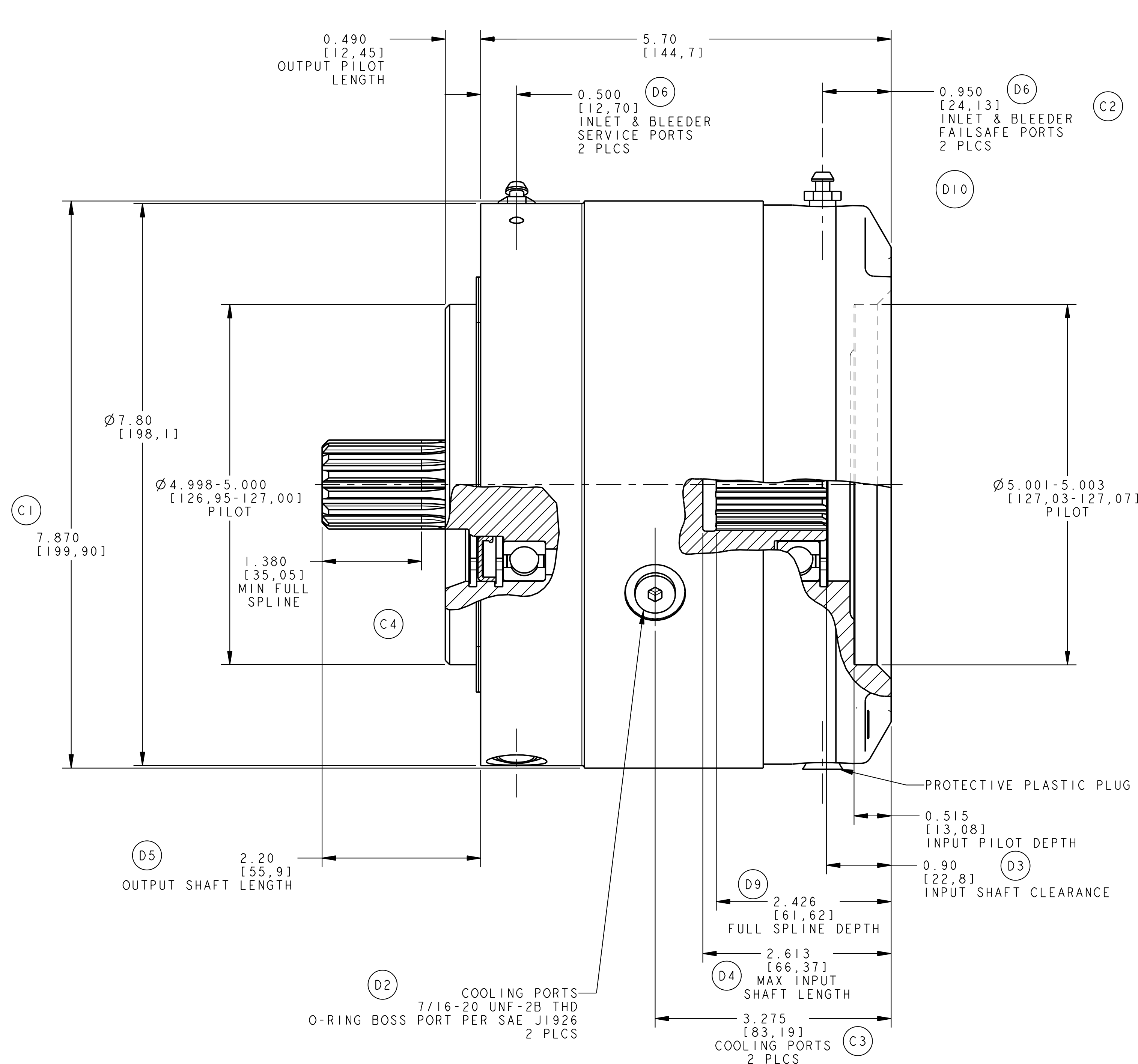


- THIS DRAWING IS MEANT TO PROVIDE CUSTOMER MOUNTING DATA ONLY. ALL DIMENSIONS ARE REFERENCE UNLESS OTHERWISE NOTED.
- THE TORQUE INFORMATION CONTAINED IN THIS DOCUMENT IS FOR REFERENCE ONLY. IT IS RECOMMENDED THAT THIS BRAKE BE TESTED IN THE SPECIFIC APPLICATION TO VERIFY PERFORMANCE.
- MAXIMUM OPERATING PRESSURE IS 2,200 PSI [152 BAR]. PRESSURE SPIKES AND SURGES NOT TO EXCEED 3,000 PSI [207 BAR].
- BRAKE CAVITY COOLING OIL PRESSURE NOT TO EXCEED 15 PSI [1 BAR].
- FILL HOUSING WITH THE SPECIFIED QUANTITY OF DTE-26. THE AMOUNT OF OIL NEEDED IS DEPENDENT UPON THE SHAFT ORIENTATION. IF THE SHAFT IS INSTALLED IN A HORIZONTAL POSITION, THE AMOUNT OF OIL ADDED TO THE BRAKE WILL BE DIFFERENT THAN IF THE SHAFT IS INSTALLED VERTICALLY.  
HORIZONTAL POSITION: 375 ML  
VERTICAL POSITION: 670 ML
- THE TORQUE INFORMATION CONTAINED WITHIN THIS DOCUMENT IS FOR REFERENCE ONLY. IT IS RECOMMENDED THAT THIS BRAKE BE TESTED IN THE SPECIFIC OEM APPLICATION TO VERIFY PERFORMANCE. (B1)



CHGR	SYM	ECO	DESCRIPTION	DATE	BY
KMc	D11	28320	ADDED 2.254	10-10-14	NDC
KMc	D10	28320	REMOVED 0.360	10-10-14	NDC
KMc	D9	28320	ADDED 2.426	10-10-14	NDC
KMc	D8	28320	WAS 0.660	10-10-14	NDC
KMc	D7	28320	WAS Ø 0.530-0.539	10-10-14	NDC
KMc	D6	28320	ADDED 2 PLCS	10-10-14	NDC
KMc	D5	28320	WAS 2.16	10-10-14	NDC
KMc	D4	28320	ADDED 2.613	10-10-14	NDC
KMc	D3	28320	ADDED 0.90	10-10-14	NDC
KMc	D2	28320	UPDATED PORT CALLOUTS	10-10-14	NDC
KMc	D1	28320	ADDED DUAL UNITS	10-10-14	NDC
BAS	C5	22192	WAS PROJECT 4193	03-09-05	SJS
TEH	C4	22192	WAS 1.5in	08-09-04	LTC
TEH	C3	22192	WAS 3.72in	08-09-04	LTC
TEH	C2	22192	WAS .865in	08-09-04	LTC
TEH	C1	22192	WAS Ø 7.9in	08-09-04	LTC
KAD	B2	21247	REMOVED "TORQUE DISCLAIMER"	01-21-03	JO
KAD	B1	21247	ADDED NOTE 6	01-21-03	JO
	A	9978	RELEASE FOR PRODUCTION	07-20-95	DMK

DO NOT SCALE THIS DRAWING  
 PROPRIETARY DATA: NOT TO BE  
 DISCLOSED, USED, OR DUPLICATED  
 FOR PROCUREMENT OR MANUFACTURING  
 PURPOSES, EXCEPT AS AUTHORIZED  
 IN WRITING BY AUSCO, INC.

**AUSCO** **PRO/E**  
 NO MANUAL CHANGES

C	C	5400	250	14T 12/24	14T 12/24
MOTOR	REDUCER	RATED TORQUE (LB IN)	RELEASE PRESSURE (PSI)	INPUT (INTERNAL)	OUTPUT (EXTERNAL)
SAE J744		[Nm]	[BAR]	SPLINE DATA	
PROJECT	DATE	PART NAME			
4579	07-20-95	MULTI-DISC F/S W S/V WET BRAKE			
DESIGNER	SCALE	PART NUMBER			
D. KROENING	1.000	CC 74165			