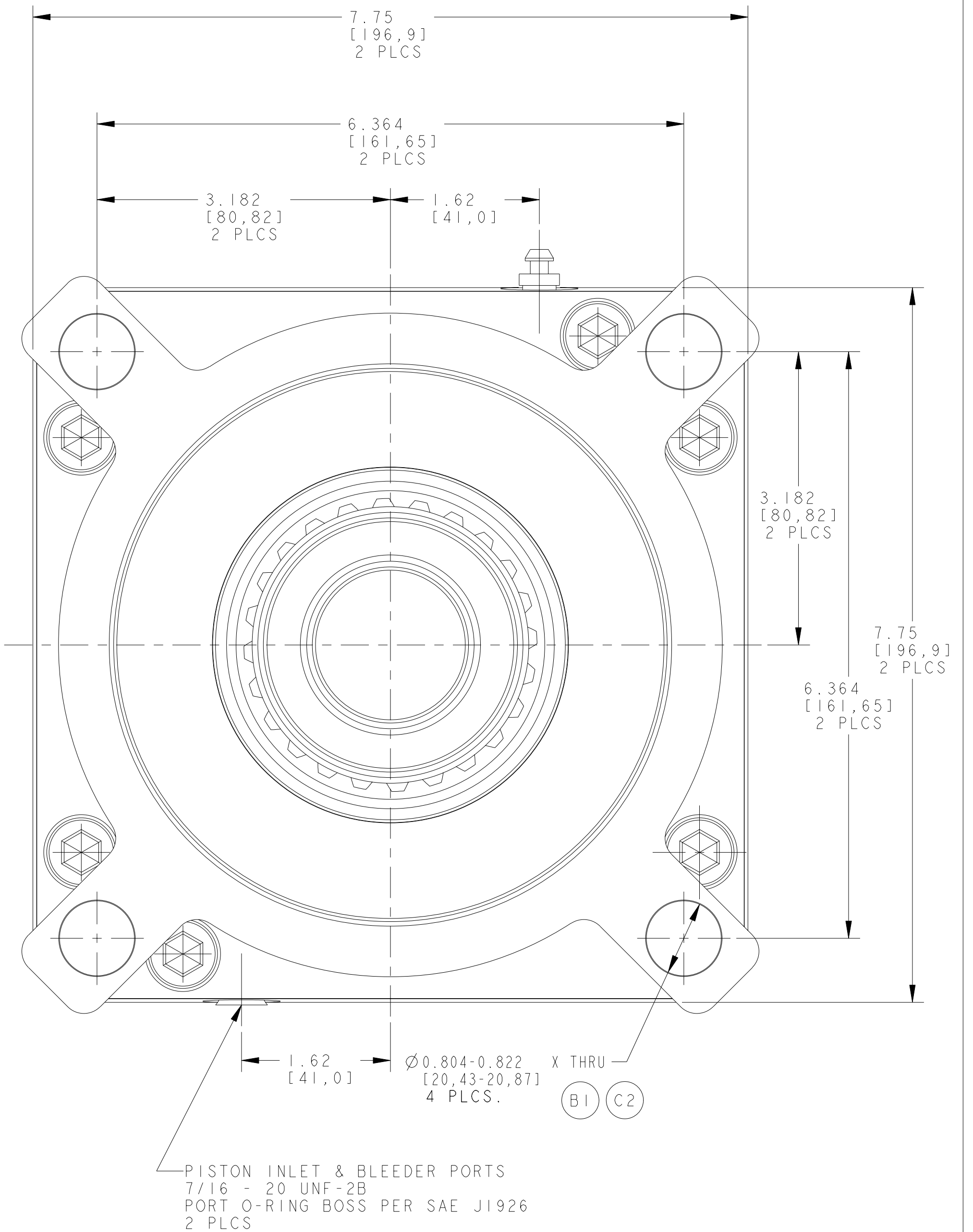
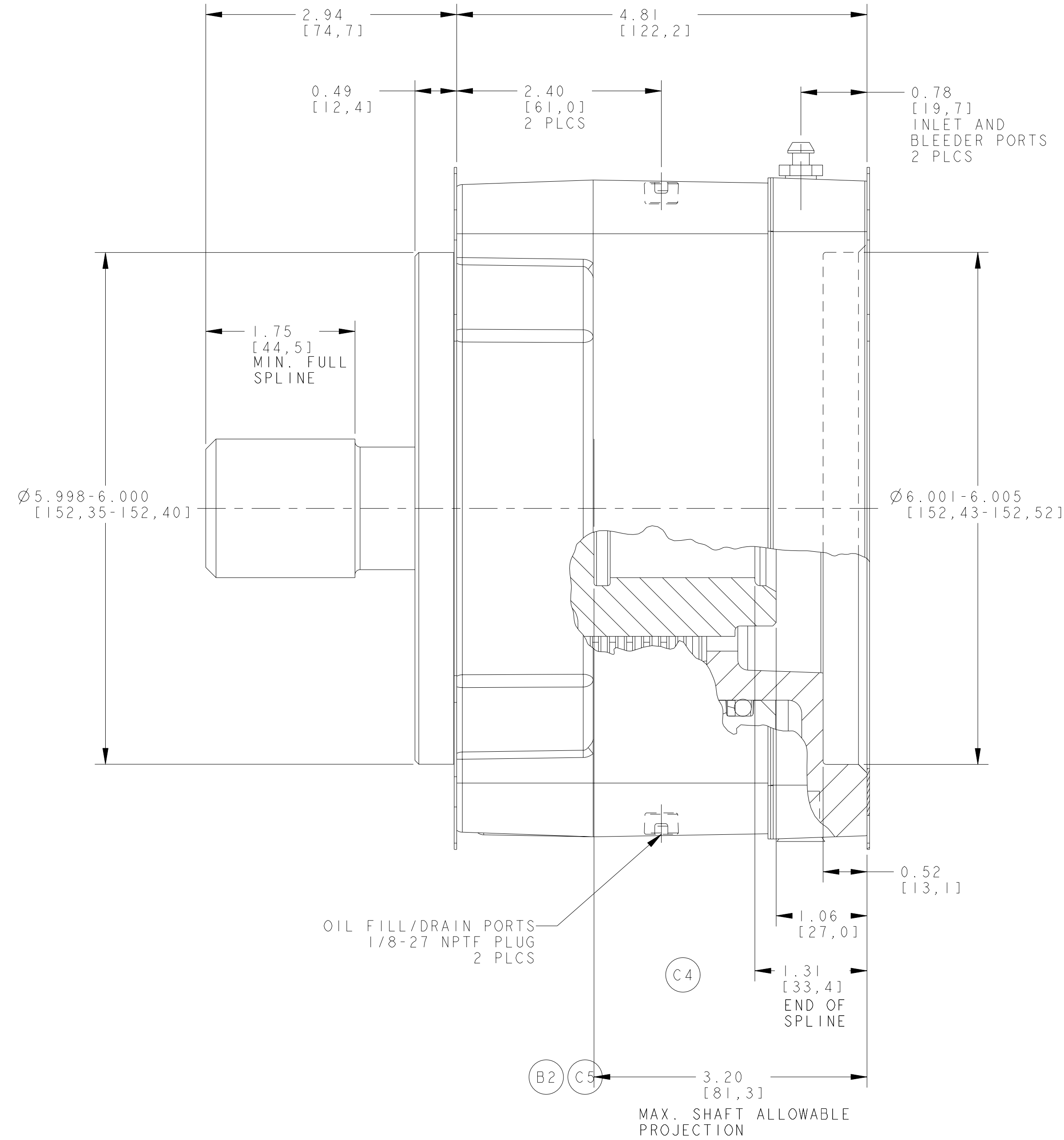
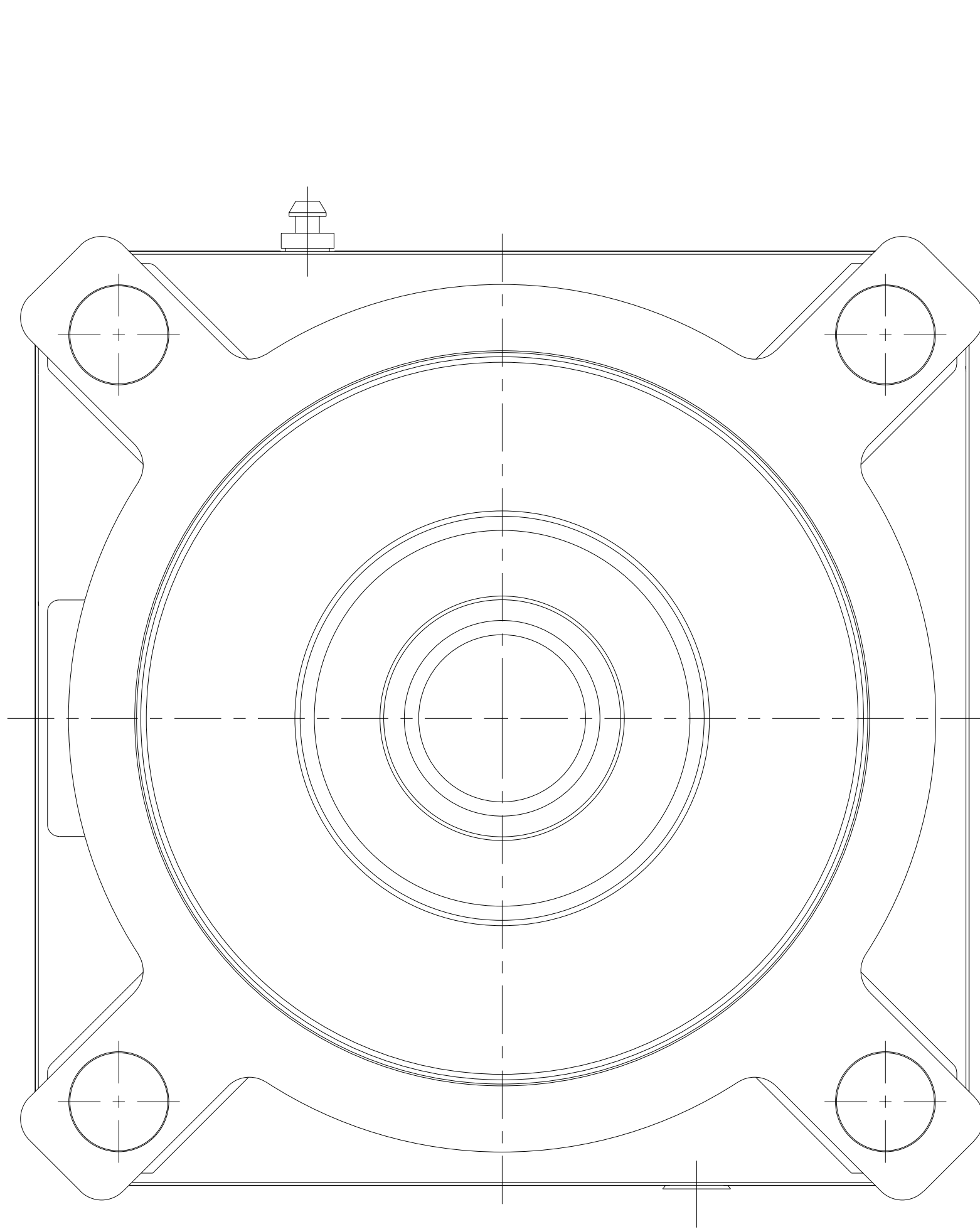


- THIS DRAWING IS MEANT TO PROVIDE CUSTOMER MOUNTING DATA ONLY. ALL DIMENSIONS ARE REFERENCE UNLESS OTHERWISE NOTED.
- THE TORQUE INFORMATION CONTAINED IN THIS DOCUMENT IS FOR REFERENCE ONLY. IT IS RECOMMENDED THAT THIS BRAKE BE TESTED IN THE SPECIFIC APPLICATION TO VERIFY PERFORMANCE.
- MAXIMUM OPERATING PRESSURE IS 2,750 PSI. PRESSURE SPIKES AND SURGES NOT TO EXCEED 3,500 PSI.
- BRAKE CAVITY COOLING OIL PRESSURE NOT TO EXCEED 15 PSI. (B3)
- FILL HOUSING WITH THE SPECIFIED QUANTITY OF DTE-26. THE AMOUNT OF OIL NEEDED IS DEPENDENT UPON THE SHAFT ORIENTATION. IF THE SHAFT IS INSTALLED IN A HORIZONTAL POSITION, THE AMOUNT OF OIL ADDED TO THE BRAKE WILL BE DIFFERENT THAN IF THE SHAFT IS INSTALLED VERTICALLY.  
HORIZONTAL POSITION: 200 ML  
VERTICAL POSITION: 380 ML



CHGR	SYM	ECO	DESCRIPTION	DATE	BY
BAS	D	22858	RELEASE PRESSURE WAS 265	07-21-05	SJS
TEH	C5	22445	WAS 3.20	12-10-04	LTC
TEH	C4	22445	REMOVED DIM. 1.70 (MIN. FULL SPLINE)	12-10-04	LTC
TEH	C3	22445	WAS PROJ 4401	12-10-04	LTC
TEH	C2	22445	WAS $\varnothing 0.807-0.822$	12-10-04	LTC
TEH	C1	22445	REVISED & REDRAWN IN PRO-E	12-10-04	LTC
APB	B3	11394	ADD NOTE 3 & 4	08-09-99	SJS
APB	B2	11394	WAS 3.13	08-09-99	SJS
APB	B1	11394	WAS $\varnothing 0.813/0.808$	08-09-99	SJS
BD	A	11043	RELEASED FOR PRODUCTION	08-12-98	SJS

DO NOT SCALE THIS DRAWING  
 PROPRIETARY DATA- NOT TO BE  
 DISCLOSED, USED, OR DUPLICATED  
 FOR PROCUREMENT OR MANUFACTURING  
 PURPOSES, EXCEPT AS AUTHORIZED  
 IN WRITING BY AUSCO, INC.

**AUSCO** **PRO/E** CREATED WITH NO MANUAL CHANGES

D		20,000	295	13T 8/16	13T 8/16	PROJECT	DATE	PART NAME
MOTOR	REDUCER	RATED TORQUE (LB IN)	RELEASE PRESSURE (PSI)	INPUT (INTERNAL)	OUTPUT (EXTERNAL)	4579	03-21-98	MULTI DISC D "WET" SQ. BRAKE
MOUNTING FLANGE SAE J744				SPLINE DATA		DESIGNER	SCALE	PART NUMBER
						TED HORNUS	1.000	CC76222