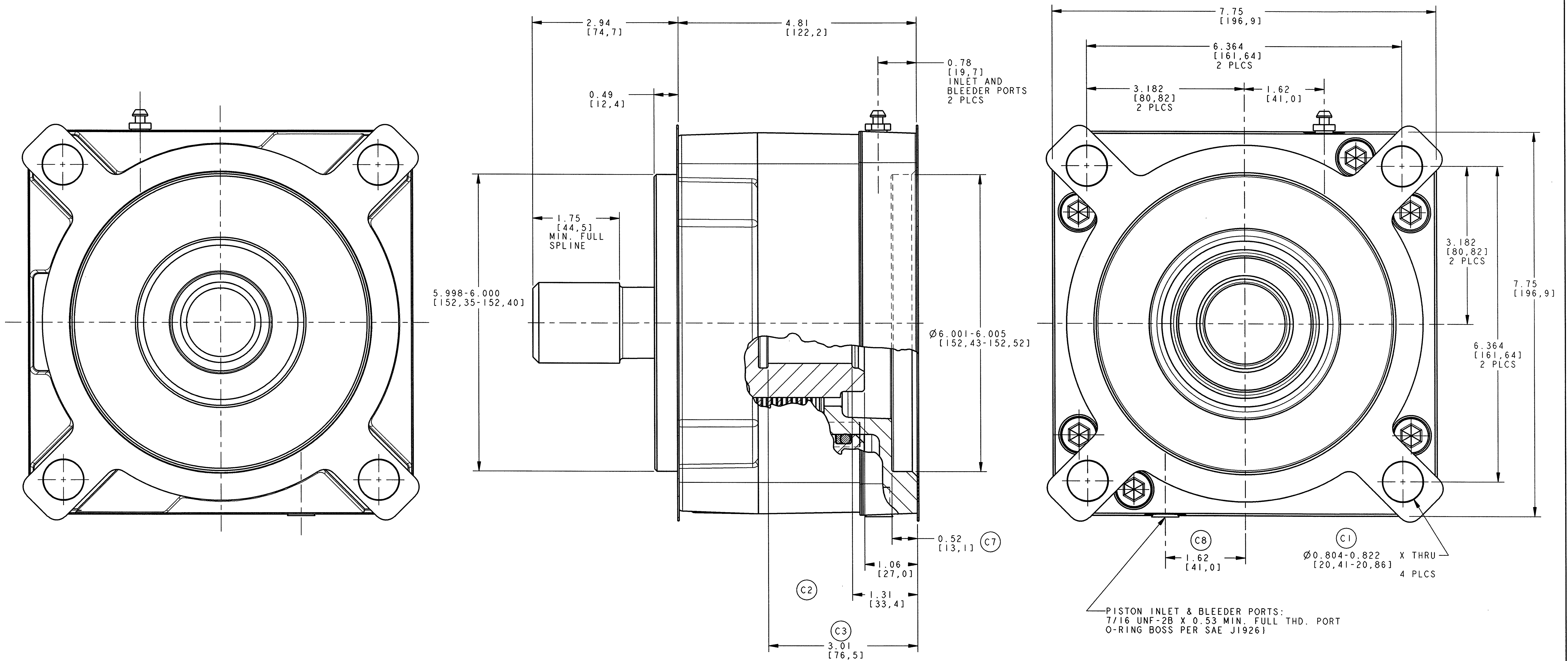


1. THIS DRAWING IS MEANT TO PROVIDE CUSTOMER MOUNTING DATA ONLY. ALL DIMENSIONS ARE REFERENCE UNLESS OTHERWISE NOTED.
2. THE TORQUE INFORMATION CONTAINED IN THIS DOCUMENT IS FOR REFERENCE ONLY. IT IS RECOMMENDED THAT THIS BRAKE BE TESTED IN THE SPECIFIC APPLICATION TO VERIFY PERFORMANCE.
3. MAXIMUM OPERATING PRESSURE IS 2,750 PSI. PRESSURE SPIKES AND SURGES NOT TO EXCEED 3,500 PSI. (C4)



BAS	C8	22491	WAS 1.615	01-18-05	TEH
BAS	C7	22491	WAS 0.515	01-18-05	TEH
BAS	C6	22491	ADDED DUAL DIM	01-18-05	TEH
BAS	C5	22491	WAS PROJ 4401	01-18-05	TEH
BAS	C4	22491	ADDED NOTE 3	01-18-05	TEH
BAS	C3	22491	WAS 3.02	01-18-05	TEH
BAS	C2	22491	REMOVED 1.71 (MIN FULL SPLINE)	01-18-05	TEH
BAS	C1	22491	WAS Ø0.822/0.807	01-18-05	TEH
TEH	B	21945	UPDATED PICTORIALY	05-14-04	LTC
KAD	A	21045	RELEASED FOR PRODUCTION	09-04-02	TEH

CHKR	SYM	ECO	DESCRIPTION	DATE	BY

DO NOT SCALE THIS DRAWING
PROPRIETARY DATA: NOT TO BE
DISCLOSED, USED, OR DUPLICATED
FOR PROCUREMENT OR MANUFACTURING
PURPOSES, EXCEPT AS AUTHORIZED
IN WRITING BY AUSCO, INC.

AUSCO **PRO/TE**
NO MANUAL CHANGES

D	D	8.400	125	13T 8/16	13T 8/16	PROJECT	DATE	PART NAME	CONFIGURATION CONTROL
MOTOR	REDUCER	RATED TORQUE (LB IN)	RELEASE PRESSURE (PSI)	INPUT (INTERNAL)	OUTPUT (EXTERNAL)	4579	09-04-02	SCALE	PART NUMBER
MOUNTING FLANGE SAE J744				SPLINE DATA		DESIGNER	TED HORNUS	1.000	CC-81840