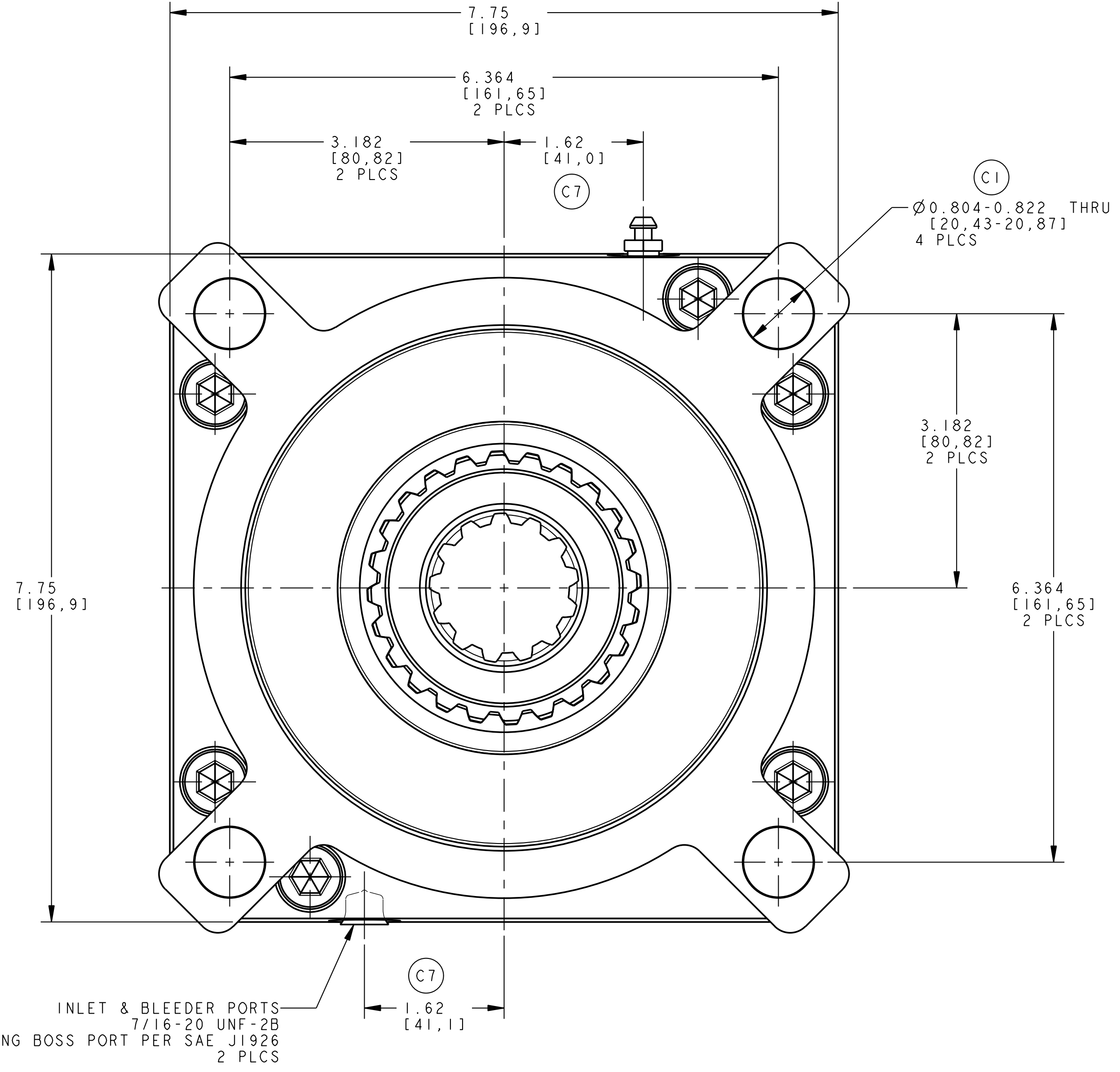
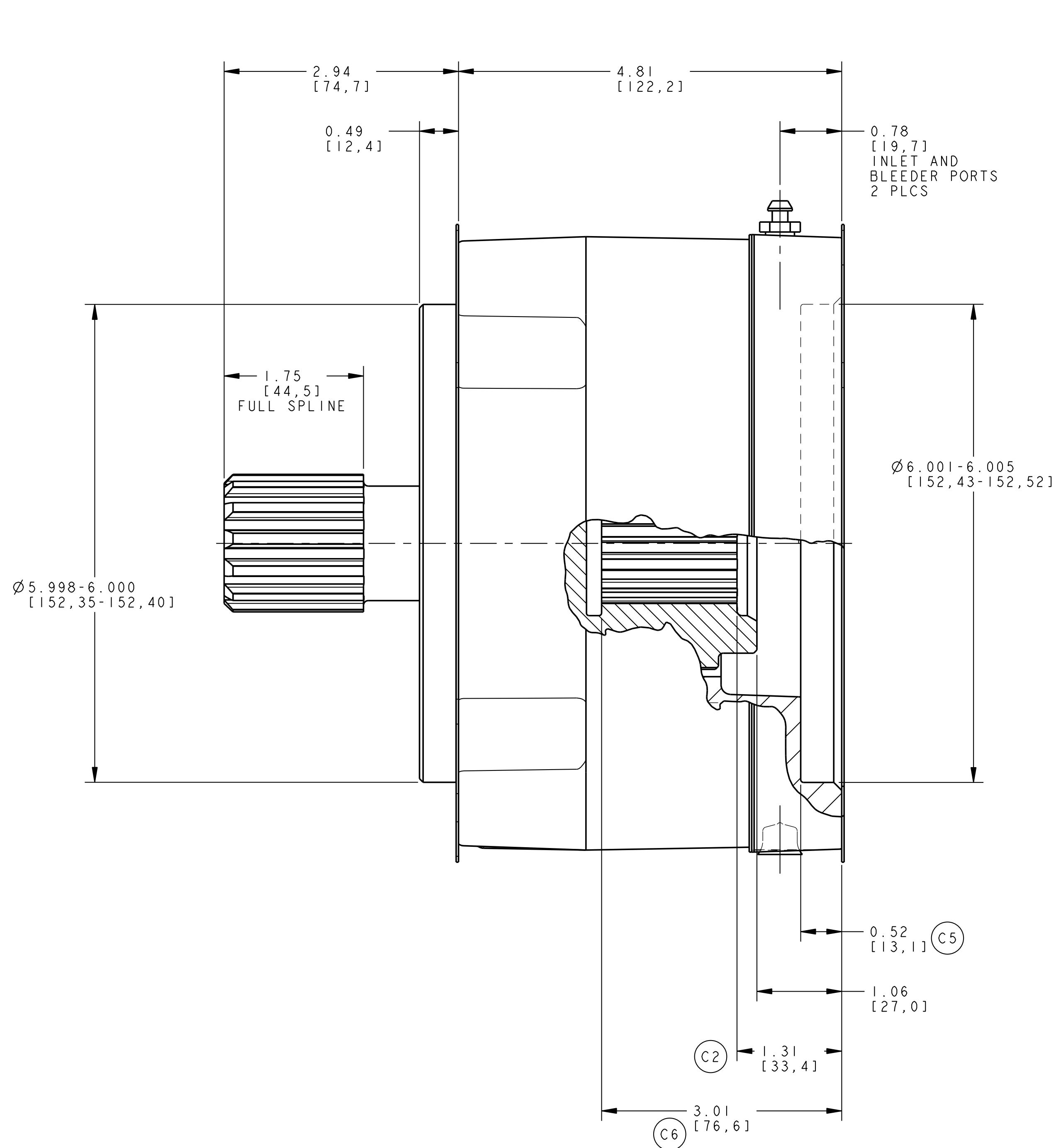


1. THIS DRAWING IS MEANT TO PROVIDE CUSTOMER MOUNTING DATA ONLY. ALL DIMENSIONS ARE REFERENCE UNLESS OTHERWISE NOTED.
2. THE TORQUE INFORMATION CONTAINED IN THIS DOCUMENT IS FOR REFERENCE ONLY. IT IS RECOMMENDED THAT THIS BRAKE BE TESTED IN THE SPECIFIC APPLICATION TO VERIFY PERFORMANCE.
3. MAXIMUM OPERATING PRESSURE IS 2,750 PSI [190 BAR]. PRESSURE SPIKES AND SURGES NOT TO EXCEED (C8) 3,500 PSI [241 BAR].



KMc	D2	28079	ADDED DUAL UNITS	04-02-14	JAH
KMc	D1	28079	UPDATED PICTORIALY	04-02-14	JAH
BAS	C8	22492	ADDED NOTE 3	01-18-05	TEH
BAS	C7	22492	WAS 1.615	01-18-05	TEH
BAS	C6	22492	WAS 3.02	01-18-05	TEH
BAS	C5	22492	WAS 0.515	01-18-05	TEH
BAS	C4	22492	ADDED DUAL DIMENSIONS	01-18-05	TEH
BAS	C3	22492	WAS PROJECT 4401	01-18-05	TEH
BAS	C2	22492	REMOVED 1.70 (MIN FULL SPLINE)	01-18-05	TEH
BAS	C1	22492	WAS Ø0.816/0.814	01-18-05	TEH
KAD	B	21045	UPDATE PICTORIALY	09-18-04	TEH
KAD	A	21045	RELEASED FOR PRODUCTION	09-04-02	TEH

DO NOT SCALE THIS DRAWING
 PROPRIETARY DATA: NOT TO BE DISCLOSED, USED, OR DUPLICATED FOR PROCUREMENT OR MANUFACTURING PURPOSES, EXCEPT AS AUTHORIZED IN WRITING BY AUSCO, INC.
 AUSECO
 CREATED WITH PRO/E NO MANUAL CHANGES

D	D	12000 [1356]	175 [12]	13T 8/16	13T 8/16
MOTOR	REDUCER	RATED TORQUE (LB IN) [BAR]	RELEASE PRESSURE (PSI) [N·m]	INPUT (INTERNAL)	OUTPUT (EXTERNAL)
MOUNTING FLANGE SAE J744				SPLINE DATA	
PROJECT 4579	DATE 09-04-02	PART NAME CONFIGURATION CONTROL BRAKE M/D "D" DRY		DESIGNER TED HORNUS	SCALE 1.000 PART NUMBER CC-81841