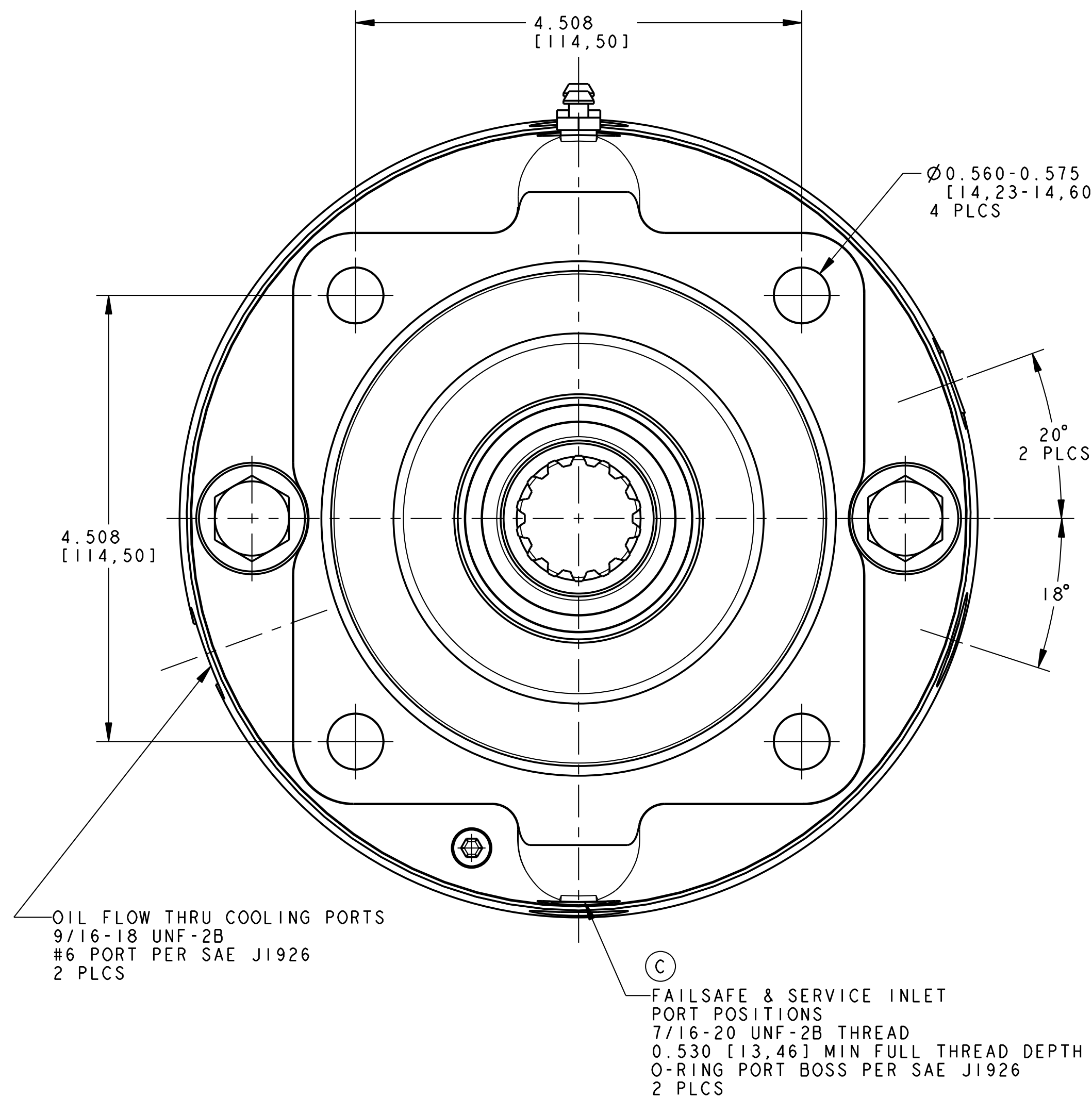
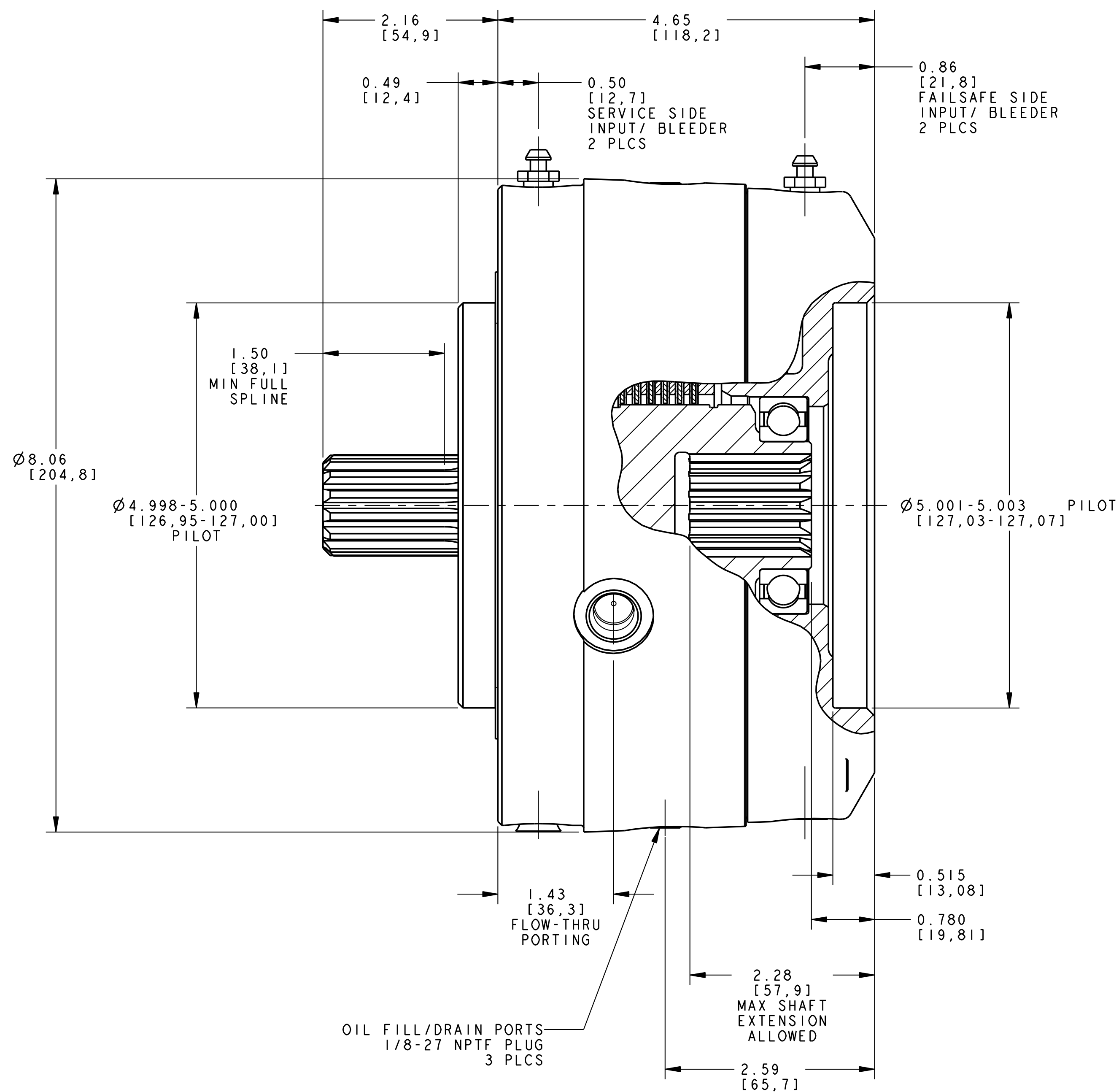
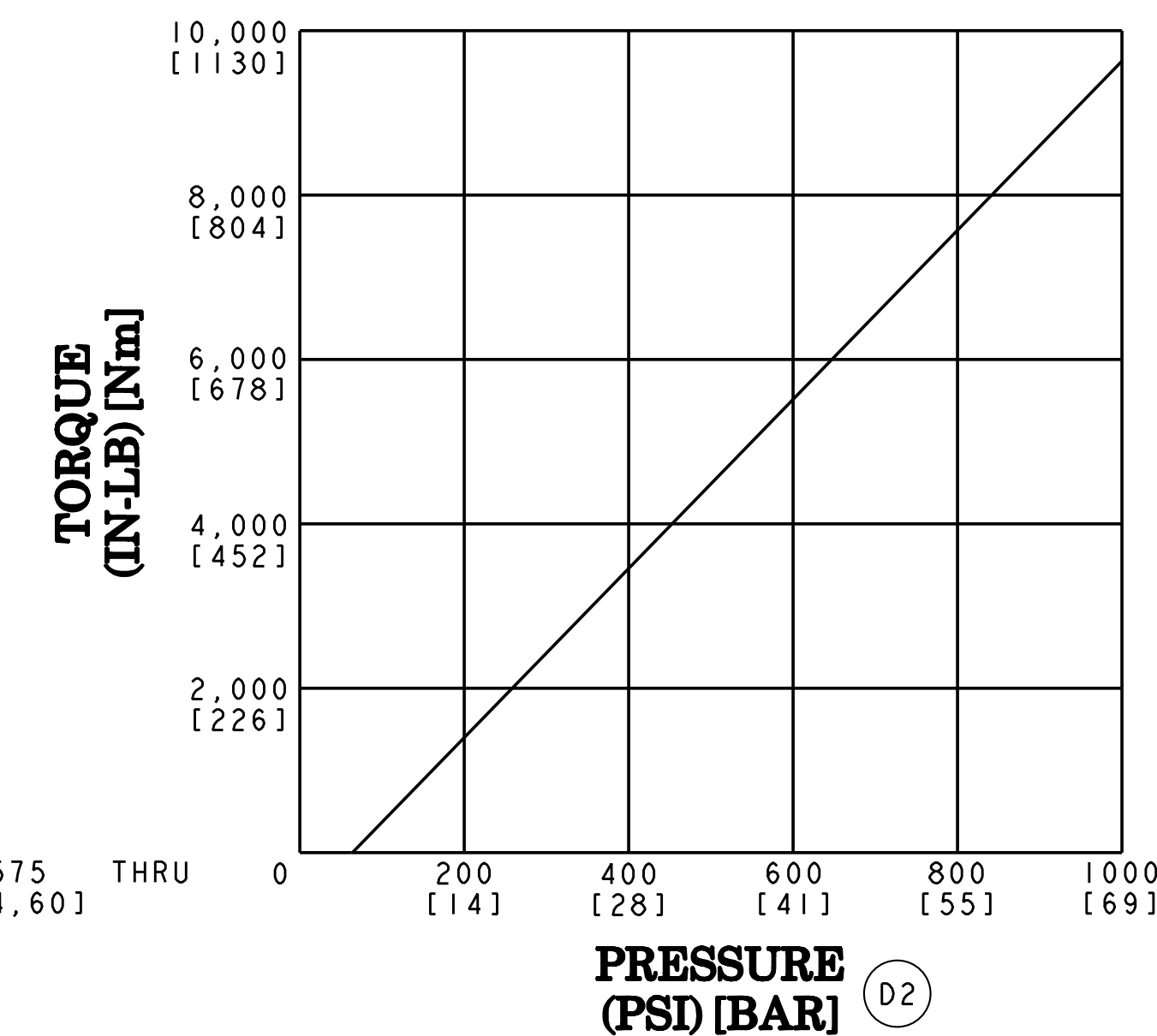


- THIS DRAWING IS MEANT TO PROVIDE CUSTOMER MOUNTING DATA ONLY. ALL DIMENSIONS ARE REFERENCE UNLESS OTHERWISE NOTED.
- THE TORQUE INFORMATION CONTAINED IN THIS DOCUMENT IS FOR REFERENCE ONLY. IT IS RECOMMENDED THAT THIS BRAKE BE TESTED IN THE SPECIFIC APPLICATION TO VERIFY PERFORMANCE.
- MAXIMUM OPERATING PRESSURE FOR PARK IS 3,000 PSI [207 BAR]. PRESSURE SPIKES AND SURGES NOT TO EXCEED 4,000 PSI [276 BAR]. MAXIMUM OPERATING PRESSURE FOR SERVICE IS 1,000 PSI [69 BAR]. PRESSURE SPIKES AND SURGES NOT TO EXCEED 1,200 PSI [83 BAR].
- BRAKE CAVITY COOLING OIL PRESSURE NOT TO EXCEED 30 PSI [2 BAR].
- FILL HOUSING WITH THE SPECIFIED QUANTITY OF DTE-26. THE AMOUNT OF OIL NEEDED IS DEPENDENT UPON THE SHAFT ORIENTATION. IF THE SHAFT IS INSTALLED IN A HORIZONTAL POSITION, THE AMOUNT OF OIL ADDED TO THE BRAKE WILL BE DIFFERENT THAN IF THE SHAFT IS INSTALLED VERTICALLY.
 (B) HORIZONTAL POSITION: 195 mL
 VERTICAL POSITION: FOR AMOUNT OF OIL, CONTACT AUSCO
- FOR FLOW THRU COOLING, CONNECT LINES TO DESIGNATED PORTS.

SERVICE TORQUE VS PRESSURE



CHKR	SYM	ECO	DESCRIPTION	DATE	BY
JAH	D2	26815	UPDATED GRAPH	10-31-11	KMc
JAH	D1	26815	ADD DUAL UNITS TO NOTES	10-31-11	KMc
TEH	C	24796	ADDED FAILSAFE & SERVICE NOTE	05-16-08	SJS
JH	B	23790	HORIZONTAL & VERTICAL POSITION WAS TBD	01-04-07	SJS
JH	A	23732	RELEASE FOR PRODUCTION	12-05-06	SJS

DO NOT SCALE THIS DRAWING
 PROPRIETARY DATA - NOT TO BE
 DISCLOSED, USED, OR DUPLICATED
 FOR PROCUREMENT OR MANUFACTURING
 PURPOSES, EXCEPT AS AUTHORIZED
 IN WRITING BY AUSCO, INC.

AUSCO **PRO/E**
 NO MANUAL CHANGES

		FAILSAFE DATA		SERVICE DATA		SPLINE DATA		PROJECT	DATE	PART NAME
C	C	7,100 [802]	255 [18]	5,000 @ 550 [565] [38]	14T 12/24	14T 12/24	4536	03-17-06	M/D SAE C WITH SERVICE-WET	
MOTOR	REDUCER	RATED TORQUE (LB IN) [Nm]	RELEASE PRESSURE (PSI) [BAR]	RATED TORQUE (LB IN) [Nm]	PRESSURE (PSI) [BAR]	INPUT (INTERNAL)	OUTPUT (EXTERNAL)	DESIGNER	SCALE	PART NUMBER
								S. SHOUP	1.000	CC 86664