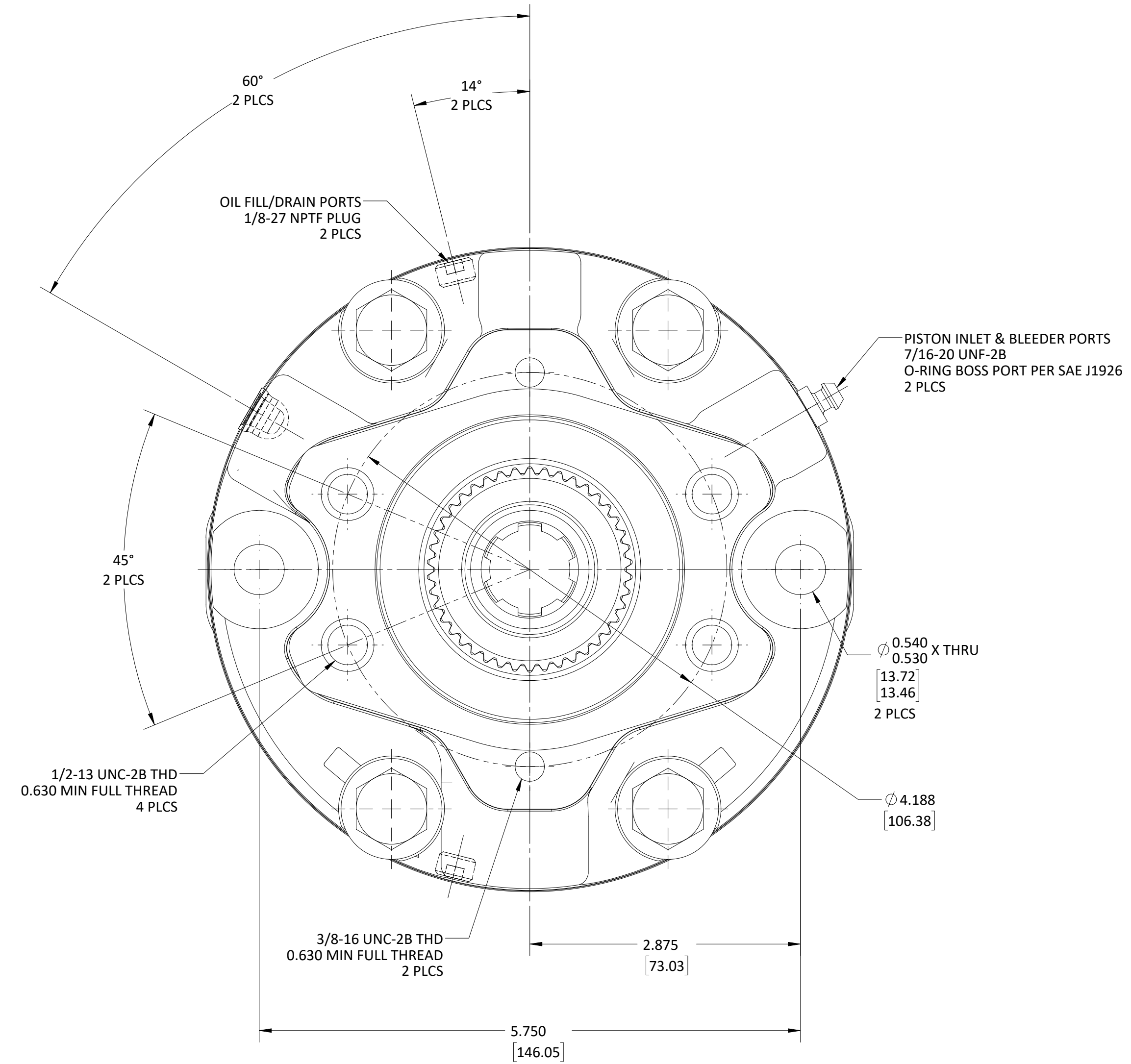
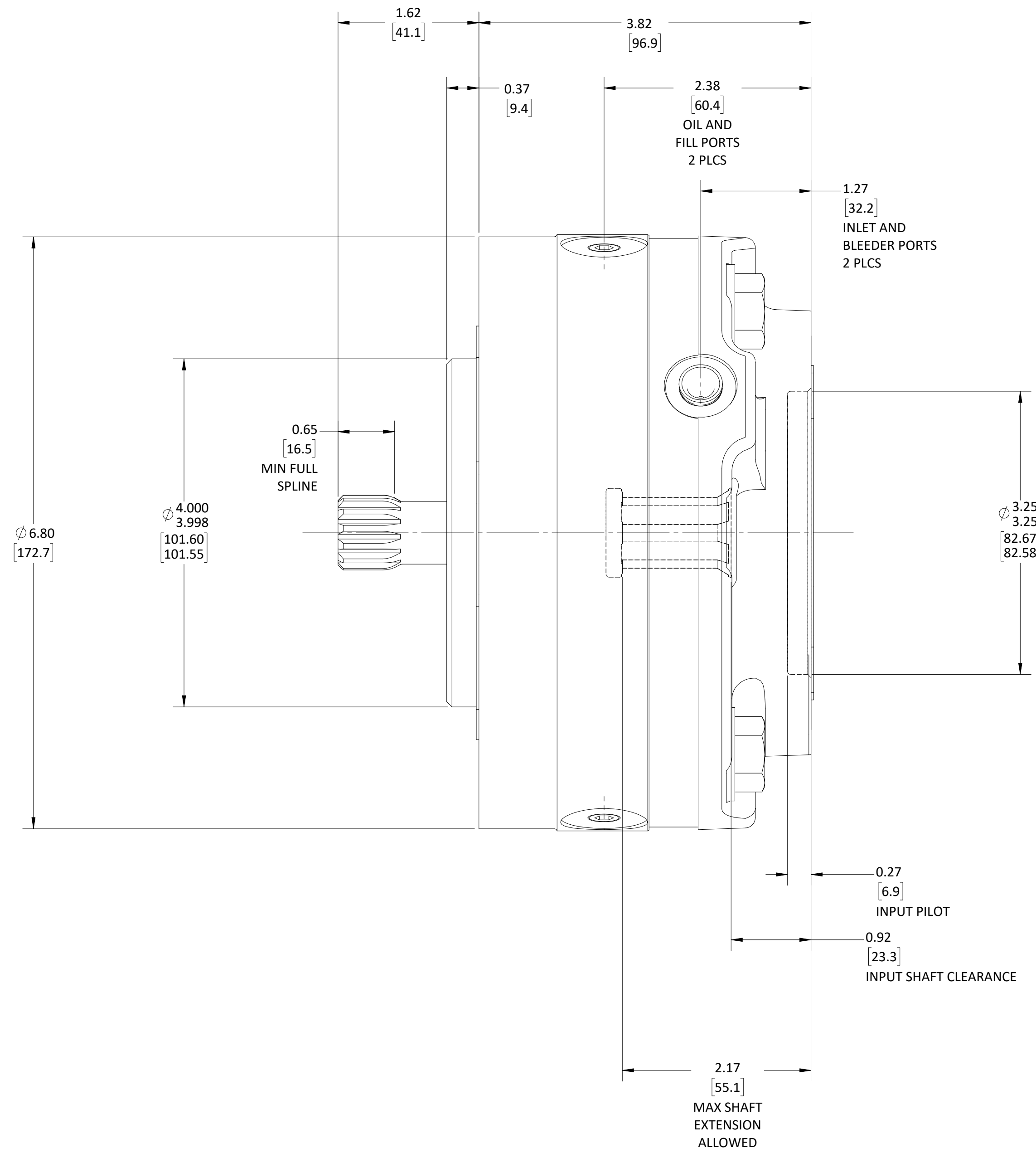
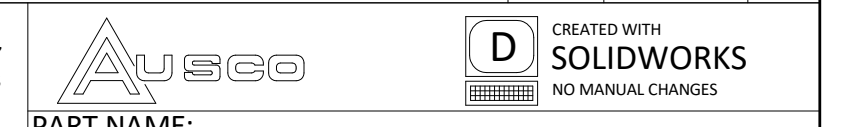


- THIS DRAWING IS MEANT TO PROVIDE CUSTOMER MOUNTING DATA ONLY. ALL DIMENSIONS ARE REFERENCE UNLESS OTHERWISE NOTED.
- THE TORQUE INFORMATION CONTAINED IN THIS DOCUMENT IS FOR REFERENCE ONLY. IT IS RECOMMEND THAT THIS BRAKE BE TESTED IN THE SPECIFIC APPLICATION TO VERIFY PERFORMANCE.
- BRAKE CAVITY COOLING OIL PRESSURE NOT TO EXCEED 15 PSI [1 BAR].
- FILL HOUSING WITH THE SPECIFIED QUANTITY OF DTE-26 (SEE CHART BELOW.) THE AMOUNT OF OIL NEEDED IS DEPENDENT UPON THE SHAFT ORIENTATION. IF THE SHAFT IS INSTALLED IN A HORIZONTAL POSITION, THE AMOUNT OF OIL ADDED TO THE BRAKE WILL BE DIFFERENT THAN IF THE SHAFT IS INSTALLED VERTICALLY.



TSZ	F2	31454	REDETAILED IN SWX: NO DESIGN CHANGE	06-14-22	DJS
TSZ	F1	31454	REMOVED REVISION E	06-14-22	DJS
-	A	10245	RELEASED FOR PRODUCTION	09-20-96	DJB
CHK	REV	ECO	DESCRIPTION	ZONE	DATE BY

DO NOT SCALE THIS DRAWING.
PROPRIETARY DATA: NOT TO BE DISCLOSED,
USED, OR DUPLICATED FOR PROCUREMENT
OR MANUFACTURING PURPOSES EXCEPT AS
AUTHORIZED IN WRITING BY
AUSCO PRODUCTS, INC.



BEARING KIT	STACK KIT	O-RING KIT	GASKET KIT	PRESSURE LIMITS (PSI) [BAR]		SPEED BY SHAFT ORIENTATION		OIL FILL BY SHAFT ORIENTATION		MOTOR	REDUCER	FAILSAFE DATA		SPLINE DATA	
PK-1320	PK-1323	PK-1324	PK-1356	MAXIMUM OPERATING	SPIKE / SURGE	HORIZONTAL	5000 RPM	HORIZONTAL	160 mL	MOD A	B	3,800 [430]	240 [17]	SAE 6B	13T 16/32
-	-	-	-	PARK	3000 [207]	4000 [276]	HORIZONTAL	5000 RPM	HORIZONTAL	MOUNTING FLANGE PER SAE J744		RATED TORQUE (LB-IN) [Nm]	REL. PRESSURE (PSI) [BAR]	INPUT (INTERNAL)	OUTPUT (EXTERNAL)
				SERVICE	N/A	N/A	VERTICAL	SEE AUSCO	VERTICAL						

PROJECT: 4579 DATE: 1996-08-05
DESIGNER: H. BALOESINGH
PART NAME: CUSTOMER CONFIGURATION MULTI-DISC WET BRAKE
SCALE: 1:1
PART NUMBER: CC75125
SHEET 1 OF 1