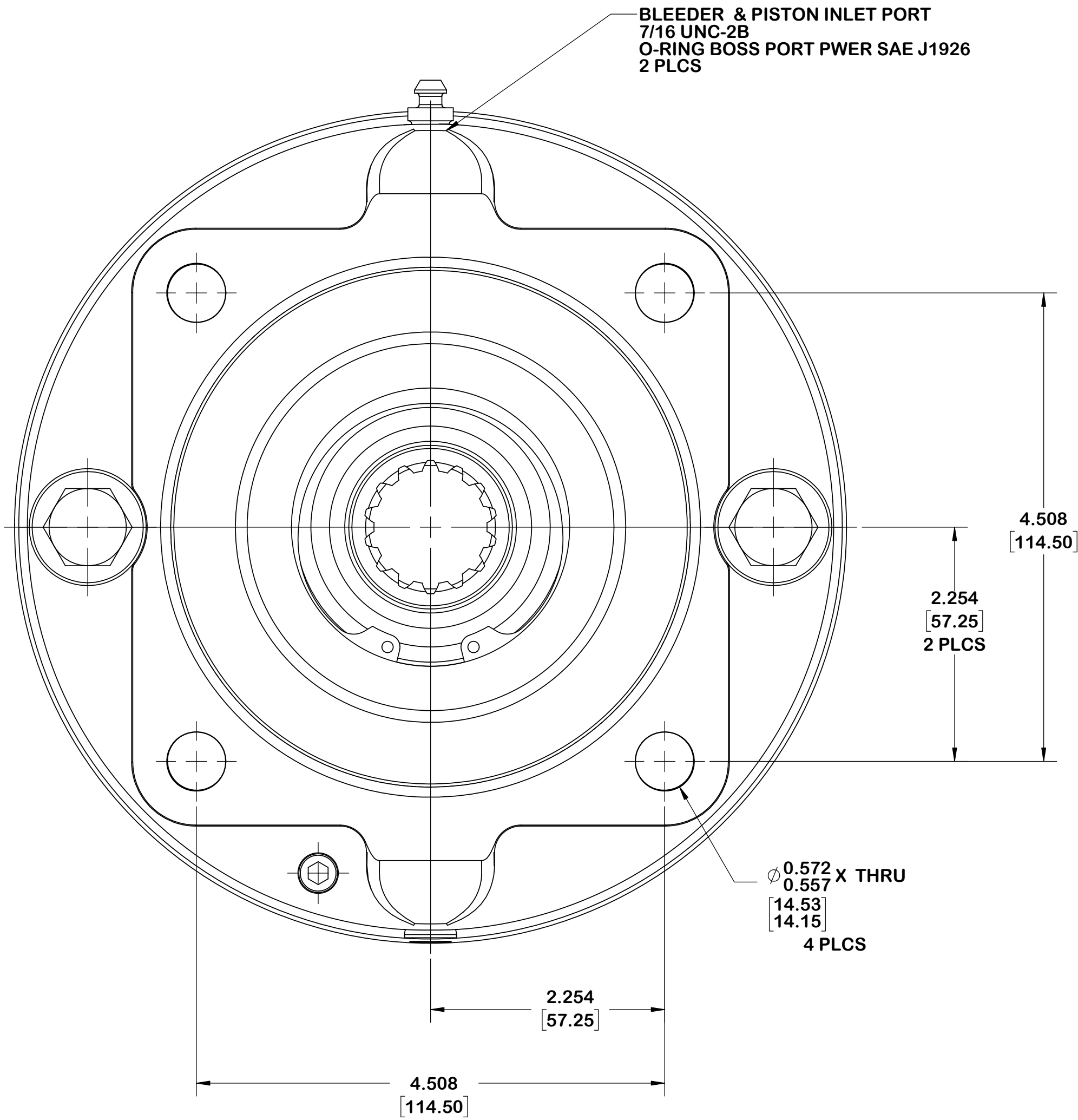
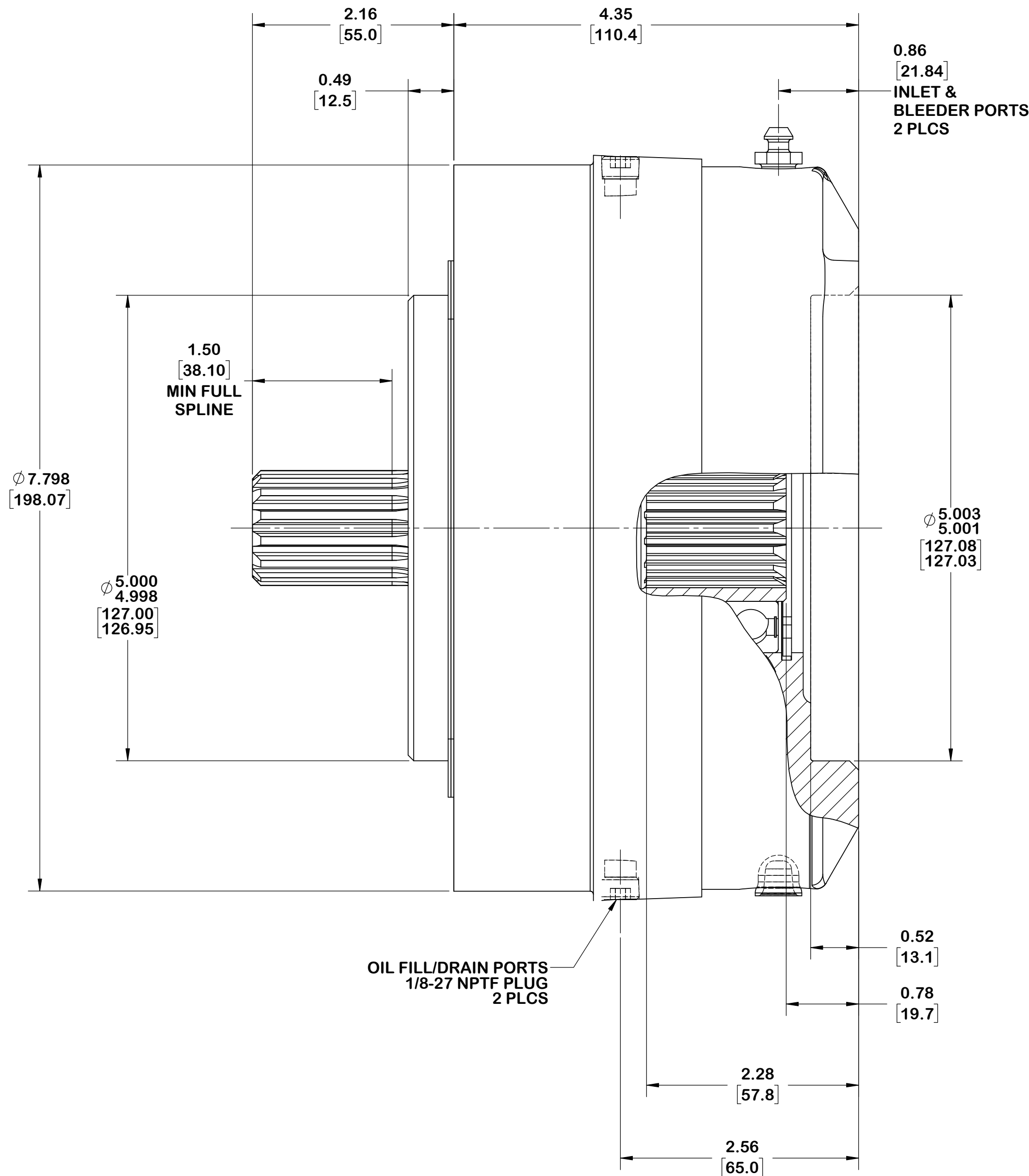


1. THIS DRAWING IS MEANT TO PROVIDE CUSTOMER MOUNTING DATA ONLY. ALL DIMENSIONS ARE REFERENCE UNLESS OTHERWISE NOTED.
2. THE TORQUE INFORMATION CONTAINED IN THIS DOCUMENT IS FOR REFERENCE ONLY. IT IS RECOMMEND THAT THIS BRAKE BE TESTED IN THE SPECIFIC APPLICATION TO VERIFY PERFORMANCE.
3. BRAKE CAVITY COOLING OIL PRESSURE NOT TO ESCEED 15 PSI [1 BAR].
4. FILL HOUSING WITH THE SPECIFIED QUANTITY OF DTE-26 (SEE CHART BELOW.) THE AMOUNT OF OIL NEEDED IS DEPENDENT UPON THE SHAFT ORIENTATION. IF THE SHAFT IS INSTALLED IN A HORIZONTAL POSITION, THE AMOUNT OF OIL ADDED TO THE BRAKE WILL BE DIFFERENT THAN IF THE SHAFT IS INSTALLED VERTICALLY.



DJS	D2	30931	REDETAILED IN SWX, W/O CHANGES	04-09-21	EMW
DJS	D1	30931	REMOVED REV B THRU C	04-09-21	EMW
HHB	A	10929	RELEASE FOR PRODUCTION	08-10-98	NDC
CHK	REV	ECO	DESCRIPTION	ZONE	DATE
DO NOT SCALE THIS DRAWING. PROPRIETARY DATA: NOT TO BE DISCLOSED, USED, OR DUPLICATED FOR PROCUREMENT OR MANUFACTURING PURPOSES EXCEPT AS AUTHORIZED IN WRITING BY AUSCO PRODUCTS, INC.			AUSCO CREATED WITH SOLIDWORKS NO MANUAL CHANGES		
PROJECT: 4579			DATE: 1997-07-01		
DESIGNER: B. DENNIS			SCALE: 1:1		
PART NAME: CUSTOMER CONFIGURATION BRK,MD,W,CC,1414,0U2H0,90			PART NUMBER: CC75628		
SHEET 1 OF 1					

BEARING KIT		STACK KIT		O-RING KIT		GASKET KIT		PRESSURE LIMITS (PSI) [BAR]			SPEED BY SHAFT ORIENTATION		OIL FILL BY SHAFT ORIENTATION		MOTOR		REDUCER		FAILSAFE DATA		SPLINE DATA	
PK-933		PK-1370		PK-1368		PK-679		MAXIMUM OPERATING SPIKE / SURGE			HORIZONTAL		HORIZONTAL		C		C		9000 [1017]		14 T, 12/24	
-		-		-		-		PARK 3000 [207] 4000 [276]			5000 RPM		150 mL		MOUNTING FLANGE PER SAE J744		RATED TORQUE (LB-IN) [Nm]		RELEASE PRESSURE (PSI) [BAR]		INPUT (INTERNAL)	
-		-		-		-		SERVICE NA NA			VERTICAL		300 mL								OUTPUT (EXTERNAL)	