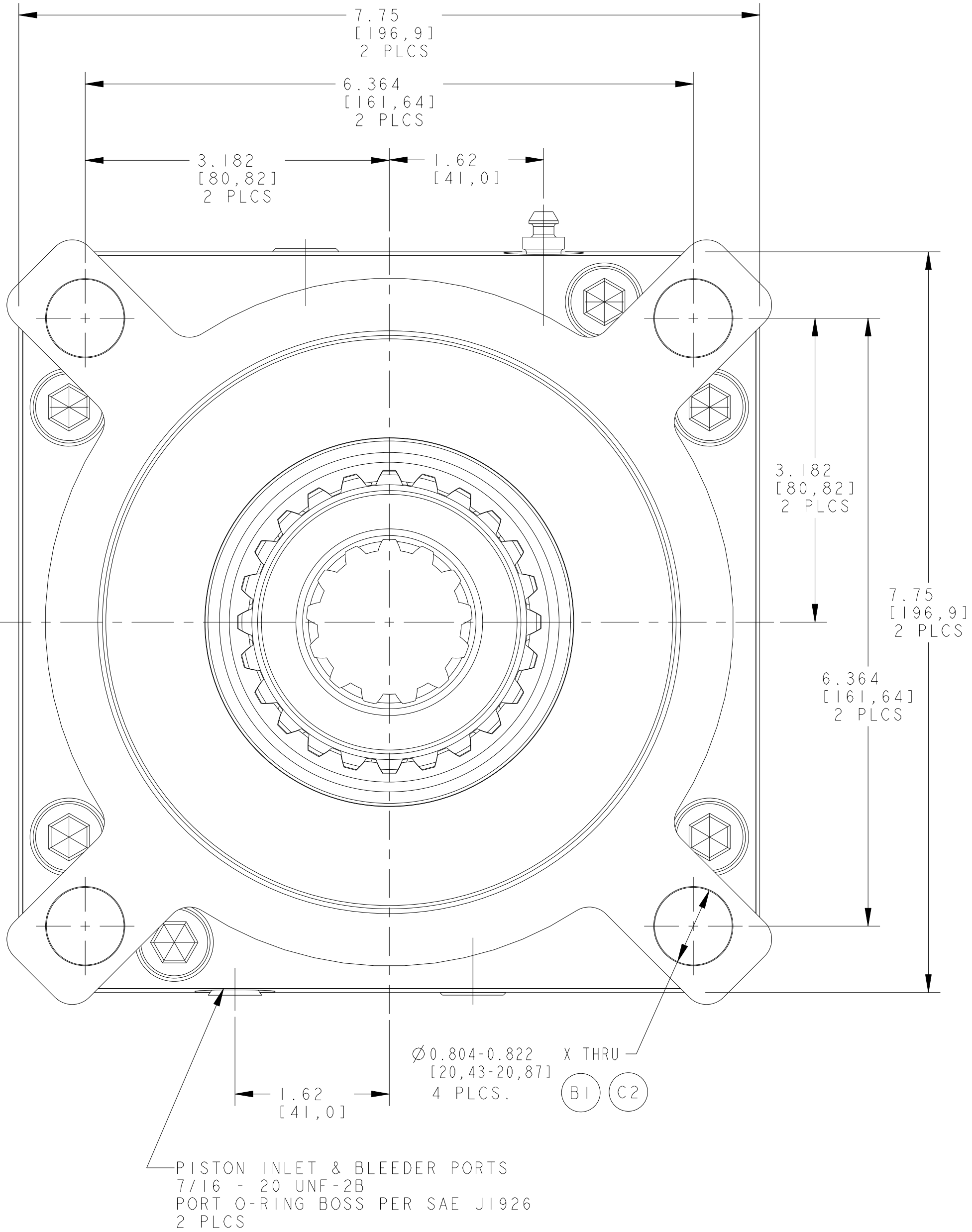
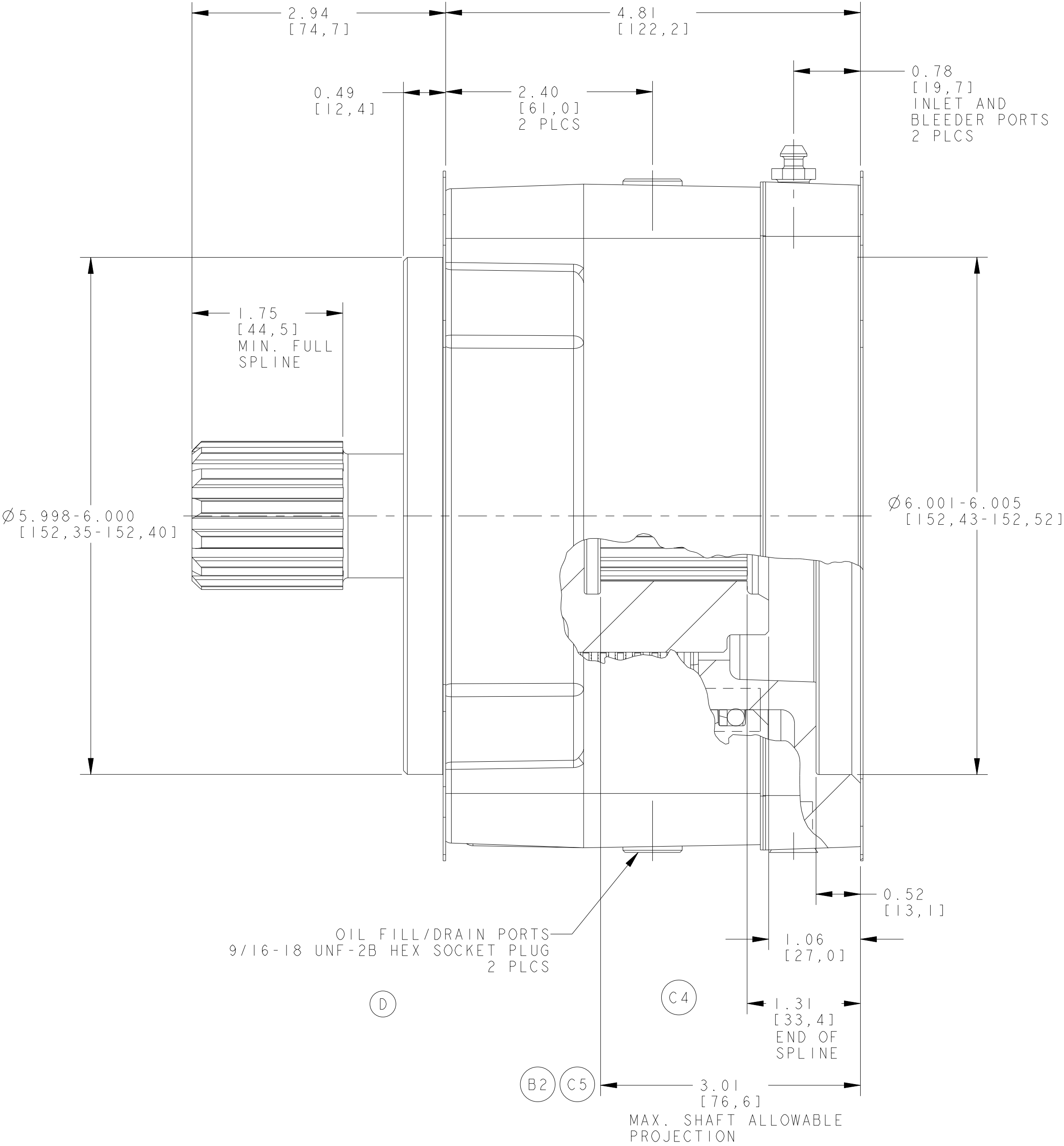
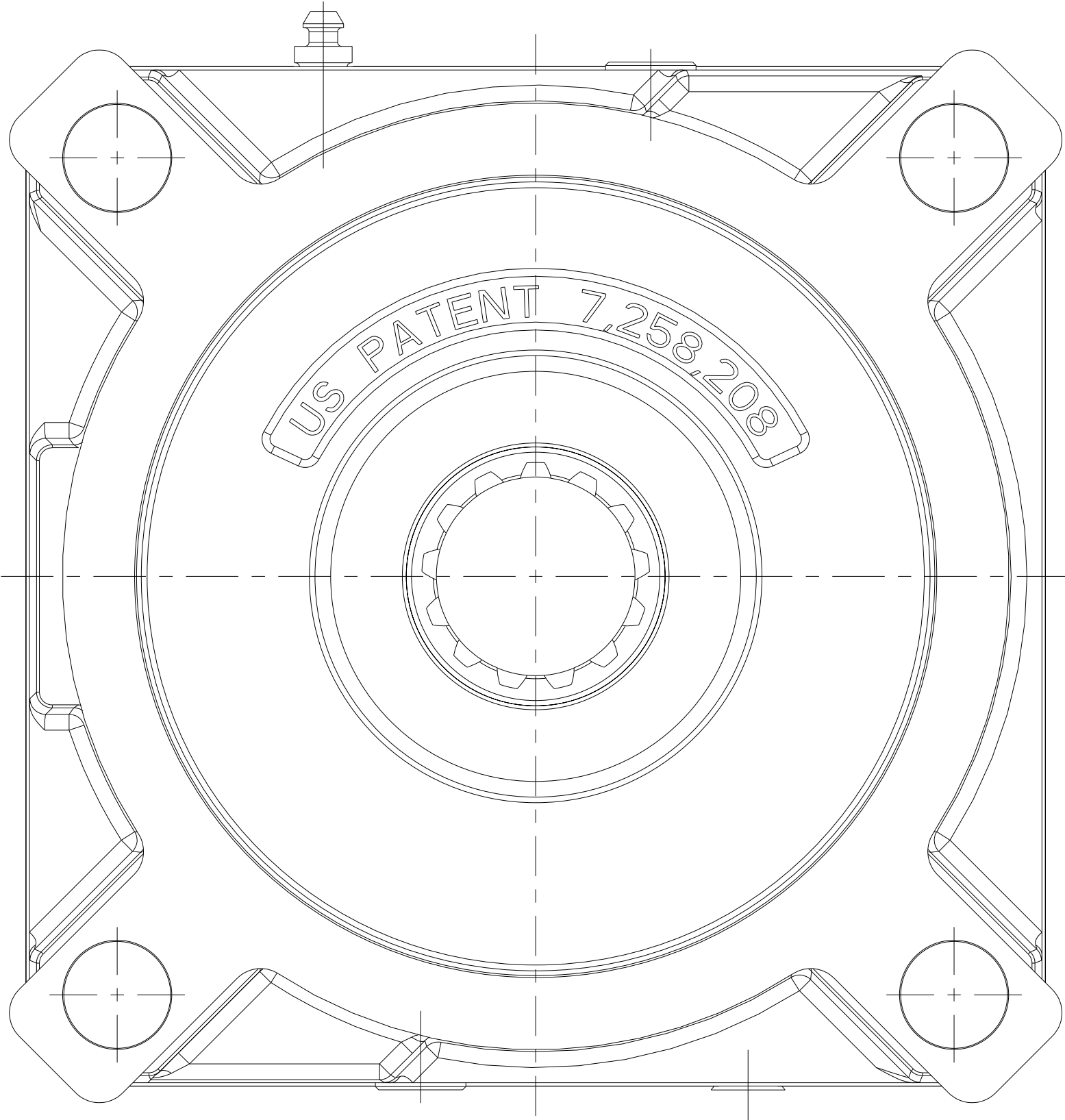


1. THIS DRAWING IS MEANT TO PROVIDE CUSTOMER MOUNTING DATA ONLY. ALL DIMENSIONS ARE REFERENCE UNLESS OTHERWISE NOTED.
2. THE TORQUE INFORMATION CONTAINED IN THIS DOCUMENT IS FOR REFERENCE ONLY. IT IS RECOMMENDED THAT THIS BRAKE BE TESTED IN THE SPECIFIC APPLICATION TO VERIFY PERFORMANCE.
3. MAXIMUM OPERATING PRESSURE IS 2,750 PSI. PRESSURE SPIKES AND SURGES NOT TO EXCEED 3,500 PSI.
4. BRAKE CAVITY COOLING OIL PRESSURE NOT TO EXCEED 15 PSI.
5. FILL HOUSING WITH THE SPECIFIED QUANTITY OF DTE-26. THE AMOUNT OF OIL NEEDED IS DEPENDENT UPON THE SHAFT ORIENTATION. IF THE SHAFT IS INSTALLED IN A HORIZONTAL POSITION, THE AMOUNT OF OIL ADDED TO THE BRAKE WILL BE DIFFERENT THAN IF THE SHAFT IS INSTALLED VERTICALLY.

HORIZONTAL POSITION: 200 ML

VERTICAL POSITION: 380 ML

B3



DJS	D	31769	WAS 1/8-27 NPTF PLUG	04-25-23	TSZ
TEH	C5	22443	WAS 3.20	12-10-04	LTC
TEH	C4	22443	REMOVED DIM. 1.70 (MIN. FULL SPLINE)	12-10-04	LTC
TEH	C3	22443	WAS PROJ 4401	12-10-04	LTC
TEH	C2	22443	WAS Ø0.807-0.822	12-10-04	LTC
TEH	C1	22443	REVISED & REDRAWN IN PRO-E	12-10-04	LTC
APB	B3	11394	ADD NOTE 3 & 4	08-09-99	SJS
APB	B2	11394	WAS 3.13	08-09-99	SJS
APB	B1	11394	WAS Ø0.813/0.808	08-09-99	SJS
BD	A	11043	RELEASED FOR PRODUCTION	08-12-98	SJS
CHKR	SYM	ECO	DESCRIPTION	DATE	BY

DO NOT SCALE THIS DRAWING  
PROPRIETARY DATA: NOT TO BE  
DISCLOSED, USED, OR DUPLICATED  
FOR PROCUREMENT OR MANUFACTURING  
PURPOSES, EXCEPT AS AUTHORIZED  
IN WRITING BY AUSCO, INC.

AUSCO

CREATED WITH  
PRO/E  
NO MANUAL CHANGES

D	D	8.400	125	13T 8/16	13T 8/16	PROJECT	DATE	PART NAME
MOTOR	REDUCER	RATED TORQUE (LB IN)	RELEASE PRESSURE (PSI)	INPUT (INTERNAL)	OUTPUT (EXTERNAL)	4579	03-21-98	MULTI DISC D "WET" SQ. BRAKE
MOUNTING FLANGE SAE J744				SPLINE DATA		DESIGNER	SCALE	PART NUMBER
						TED HORNUS	1.000	CC76351