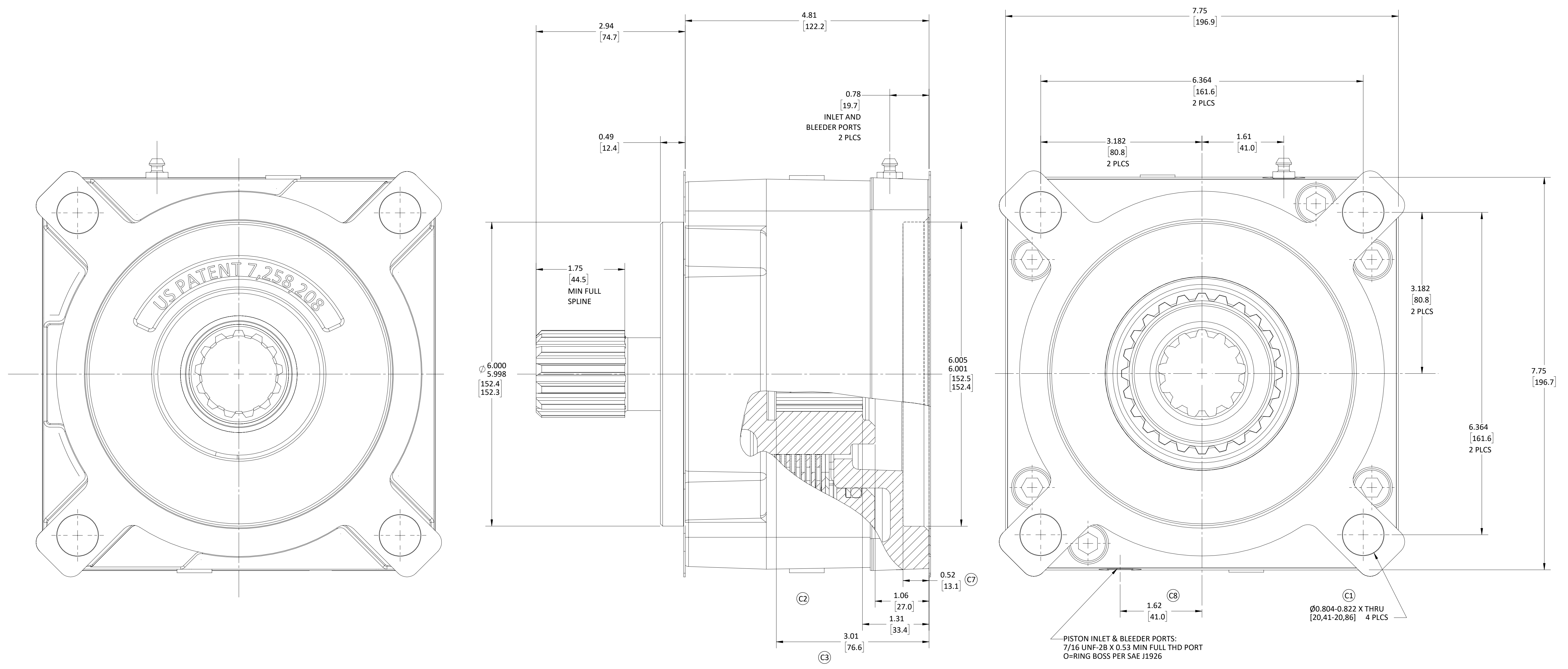


- THIS DRAWING IS MEANT TO PROVIDE CUSTOMER MOUNTING DATA ONLY. ALL DIMENSIONS ARE REFERENCE UNLESS OTHERWISE NOTED.
- THE TORQUE INFORMATION CONTAINED IN THIS DOCUMENT IS FOR REFERENCE ONLY. IT IS RECOMMENDED THAT THIS BRAKE BE TESTED IN THE SPECIFIC APPLICATION TO VERIFY PERFORMANCE.
- MAXIMUM OPERATING PRESSURE IS 2.750 PSI [189 BAR]. PRESSURE SPIKES AND SURGES NOT TO EXCEED 3.500 PSI [241 BAR]. (C4)



CHK	REV	ECO	DESCRIPTION	ZONE	DATE	BY
TSZ	D	31690	REDRAWN IN SWX - NO DESIGN CHANGE		02-21-23	MJB
BAS	C8	22491	WAS 1.615	B6	01-18-05	TEH
BAS	C7	22491	WAS 0.515	B5	01-18-05	TEH
BAS	C6	22491	ADDED DUAL DIM		01-18-05	TEH
BAS	C5	22491	WAS PROJ 4401		01-18-05	TEH
BAS	C4	22491	ADDED NOTE 3	D3, D5	01-18-05	TEH
BAS	C3	22491	WAS 3.02	B5	01-18-05	TEH
BAS	C2	22491	REMOVED 1.71 (MIN FULL SPLINE)	B5	01-18-05	TEH
BAS	C1	22491	WAS Ø0.822/0.807	B7	01-18-05	TEH
TEH	B	21945	UPDATED PICTORIALY		05-14-04	LTC
KAD	A	21045	RELEASED FOR PRODUCTION		09-04-02	TEH

DO NOT SCALE THIS DRAWING. PROPRIETARY DATA: NOT TO BE DISCLOSED, USED, OR DUPLICATED FOR PROCUREMENT OR MANUFACTURING PURPOSES EXCEPT AS AUTHORIZED IN WRITING BY AUSCO PRODUCTS, INC.

AUSCO **SOLIDWORKS**

PROJECT: 4579 DATE: 2002-09-04
 DESIGNER: TED HORNUS
 SCALE: 1:1
 SHEET 1 OF 1

PART NAME: CONFIGURATION CONTROL M/D BRAKE "D" DRY
 PART NUMBER: CC81840

BEARING KIT	STACK KIT	O-RING KIT	GASKET KIT	MOTOR	REDUCER	FAILSAFE DATA		SPLINE DATA	
PK-1511	PK-1506	PK-1373	PK-1374	D	D	8.400 [949]	125 [8.6]	13T 8/16	13T 8/16
-	-	-	-	MOUNTING FLANGE PER SAE J744		RATED TORQUE (LB-IN) [Nm]	REL. PRESSURE (PSI) [BAR]	INPUT (INTERNAL)	OUTPUT (EXTERNAL)