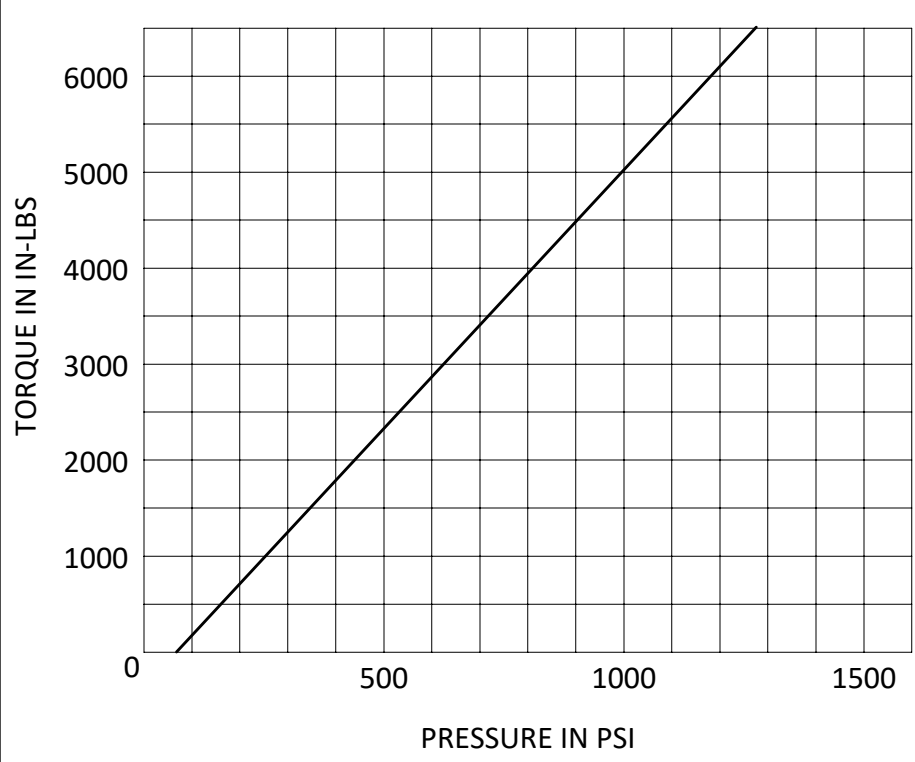
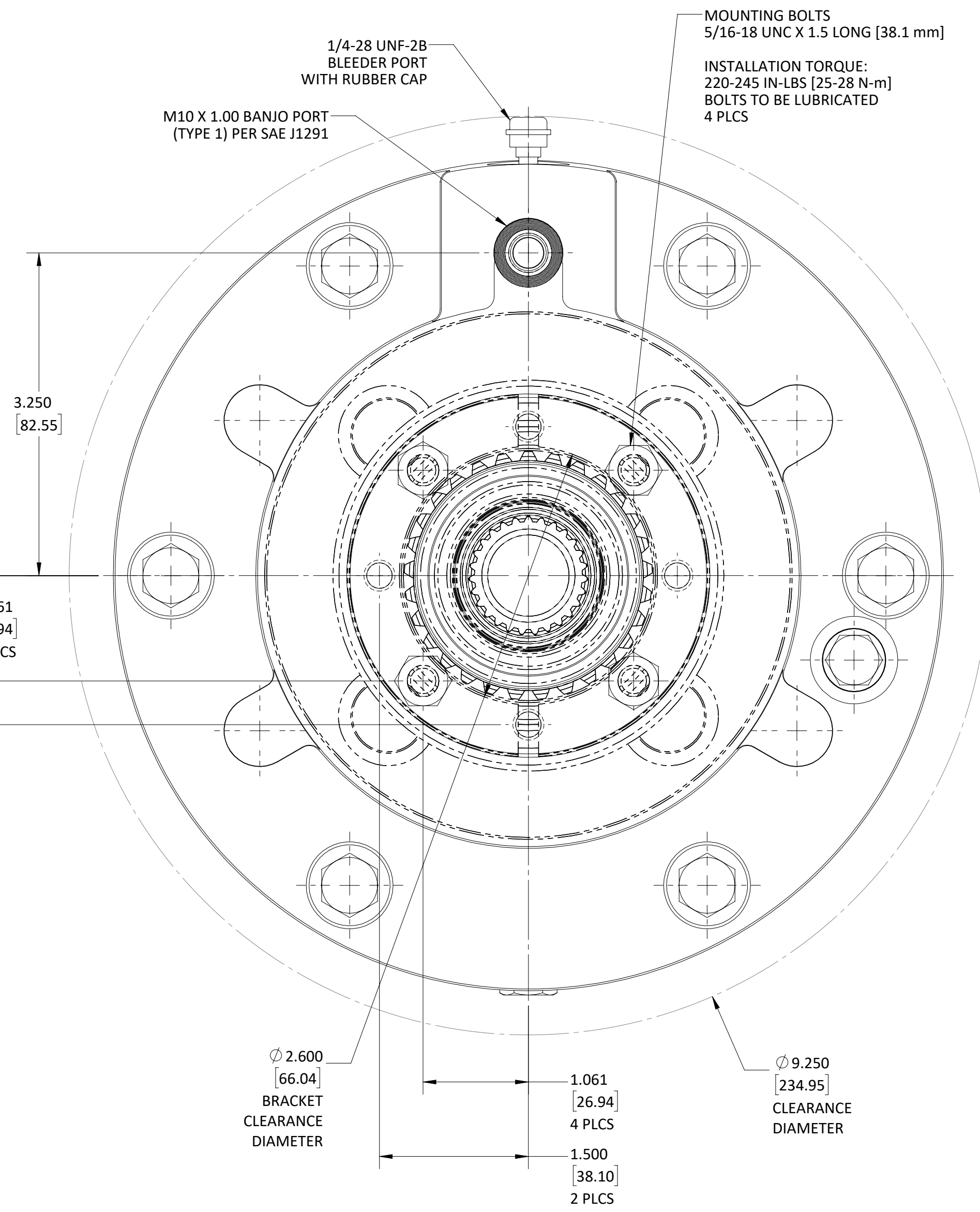
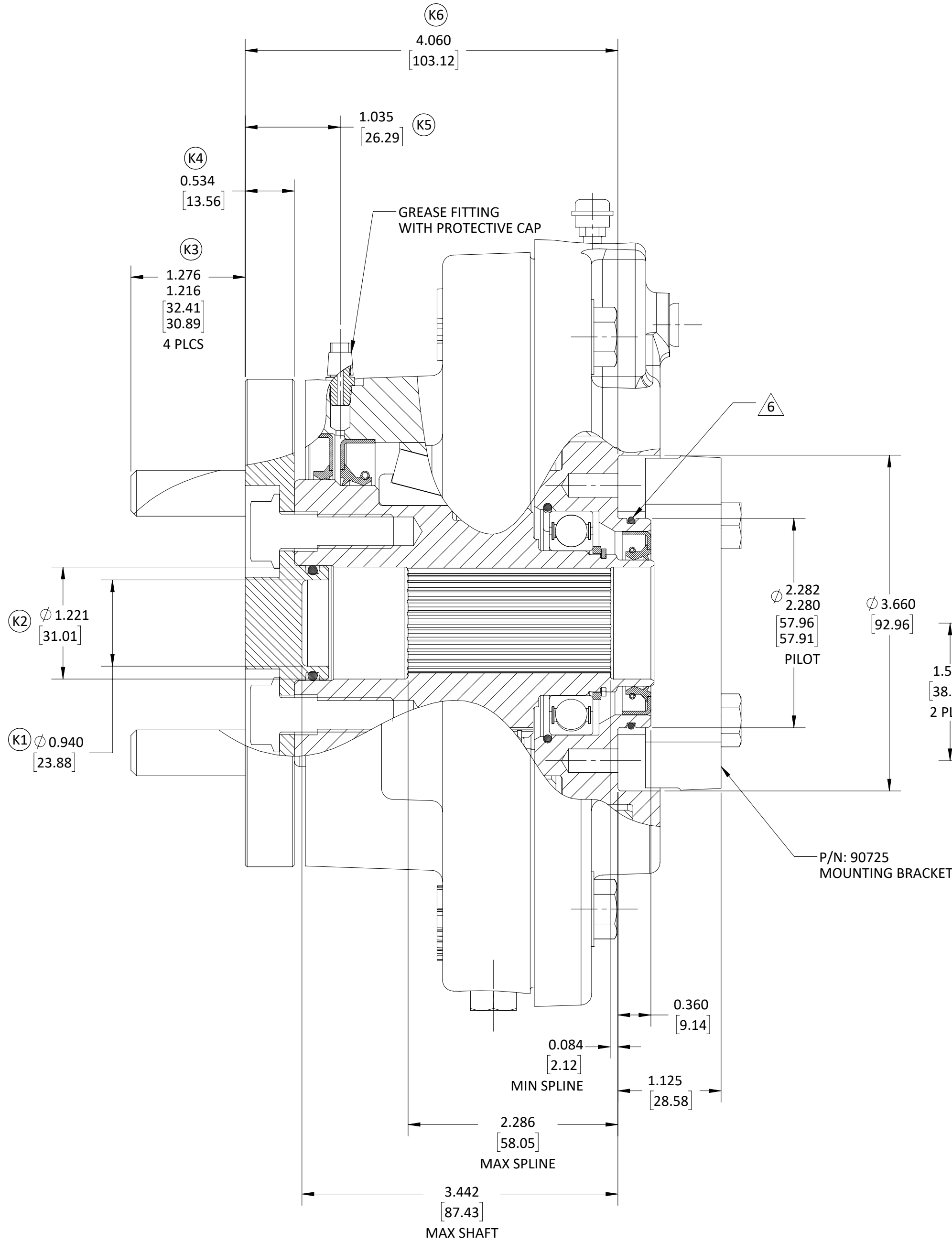
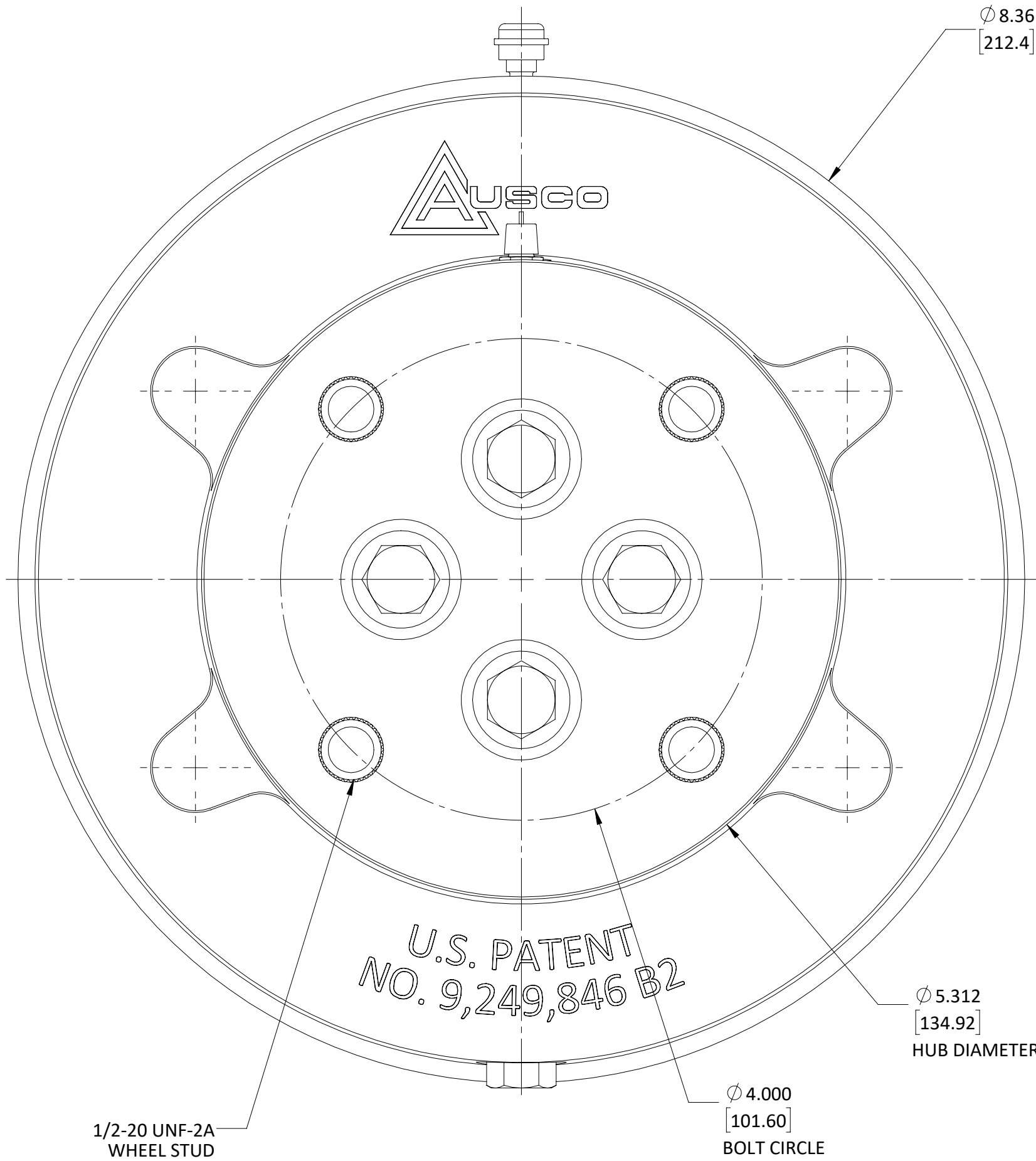


- NOTES:
- THIS DRAWING IS MEANT TO PROVIDE CUSTOMER MOUNTING DATA ONLY. ALL DIMENSIONS ARE REFERENCE UNLESS OTHERWISE NOTED.
 - THE TORQUE INFORMATION CONTAINED IN THIS DOCUMENT IS FOR REFERENCE ONLY. IT IS RECOMMEND THAT THIS BRAKE BE TESTED IN THE SPECIFIC APPLICATION TO VERIFY PERFORMANCE.
 - NOTE REMOVED.
 - BRAKE IS PREFILLED WITH 240 mL OF AW68 OIL.
 - 0.126 CU. IN. [2.06mL] MIN ACTUATION VOLUME (NEW).
 - 0.362 CU. IN. [5.93mL] MIN ACTUATION VOLUME (WORN).
 - CUSTOMER TO APPLY LUBRICANT TO PILOT. (DOW CORNING 200 OR EQUIVALENT).
 - ACTUATION FLUID: PETROLEUM BASED HYDRAULIC FLUID ONLY.



BEARING KIT	THRUST WASHER KIT	STACK KIT	O-RING KIT	STUD KIT	STUD KIT	PRESSURE LIMITS (PSI) [BAR]		SPEED BY SHAFT ORIENTATION		OIL FILL BY SHAFT ORIENTATION		SERVICE DATA		SPLINE DATA		PROJECT:		DATE:		DESIGNER:		SCALE: 1:1		PART NUMBER:	
PK.2035	PK.2231	PK.2036	PK.2037	PK.2233	PK.2686	MAXIMUM OPERATING SPIKE / SURGE		HORIZONTAL 1000 RPM		HORIZONTAL		5,000 [565] @ 1,000 [69]		27T 24/48		4 BOLTS ON: Ø4.000 (101.6mm)		4703		2010-07-16		K. McALLISTER		SHEET 1 OF 1	
-	-	-	-	-	-	PARK N/A N/A		VERTICAL		SEE AUSCO		RATED TORQUE (LB-IN) [Nm]		PRESSURE (PSI) [BAR]		INPUT (INTERNAL)		OUTPUT (EXTERNAL)							
						SERVICE 1500 [103] 2000 [138]		VERTICAL		SEE AUSCO															

KAD	K7	31962	ADDED STUD KIT PK.2686	A4	10-13-23	TSZ
KAD	K6	31962	WAS 4.000	D4	10-13-23	TSZ
KAD	K5	31962	WAS 0.975	D4	10-13-23	TSZ
KAD	K4	31962	WAS 0.474	D4	10-13-23	TSZ
KAD	K3	31962	WAS 1.246/1.186	C4	10-13-23	TSZ
KAD	K2	31962	WAS Ø1.000	C3	10-13-23	TSZ
KAD	K1	31962	ADDED Ø0.940	B3	10-13-23	TSZ
KMc	J3	31864	REMOVED REVISIONS B - H		07-18-23	TSZ
KMc	J2	31864	REM NOTE 3 MAX OPERATING PRESSURE	D3	07-18-23	TSZ
KMc	J1	31864	REDRAWN IN SWX		07-18-23	TSZ
JAH	A	26362	RELEASE FOR PRODUCTION		12-10-10	LTC
CHK	REV	ECO	DESCRIPTION	ZONE	DATE	BY
DO NOT SCALE THIS DRAWING. PROPRIETARY DATA: NOT TO BE DISCLOSED, USED, OR DUPLICATED FOR PROCUREMENT OR MANUFACTURING PURPOSES EXCEPT AS AUTHORIZED IN WRITING BY AUSCO PRODUCTS, INC.						
AUSCO						CREATED WITH SOLIDWORKS NO MANUAL CHANGES
PART NAME: CUSTOMER CONFIGURATION M/D BRAKE - WET						
PROJECT: 4703 DATE: 2010-07-16						
DESIGNER: K. McALLISTER						
SCALE: 1:1						
PART NUMBER: CC93040						
SHEET 1 OF 1						